

## Matted seat Chairs

Chair Start	1 8
3 Turned Splats	0 6
Pitch feet	0 2
Over seat	0 2
Hollow stay rail	0 4
Tapering feet	0 4
Hollow scroll Top	1 5
Scroll Back feet	0 9
Elbows with Turned Stumps	2 9
Round Ends	0 4
	<hr/> 8 3

Pattern Chair Start	1 8
3 Turned Pillows double throat	6
Pitch back feet	0 2
Hollow stay rail	0 4
Tapering back feet	0 2
Hollow scroll Top	1 5
Scroll Back feet	0 9
Grecian front feet	1 5
Rabiting seat rails	0 6
Crane neck Elbows with scroll Ends	3 9
	<hr/> 10 6

## Cane Bottom Chairs

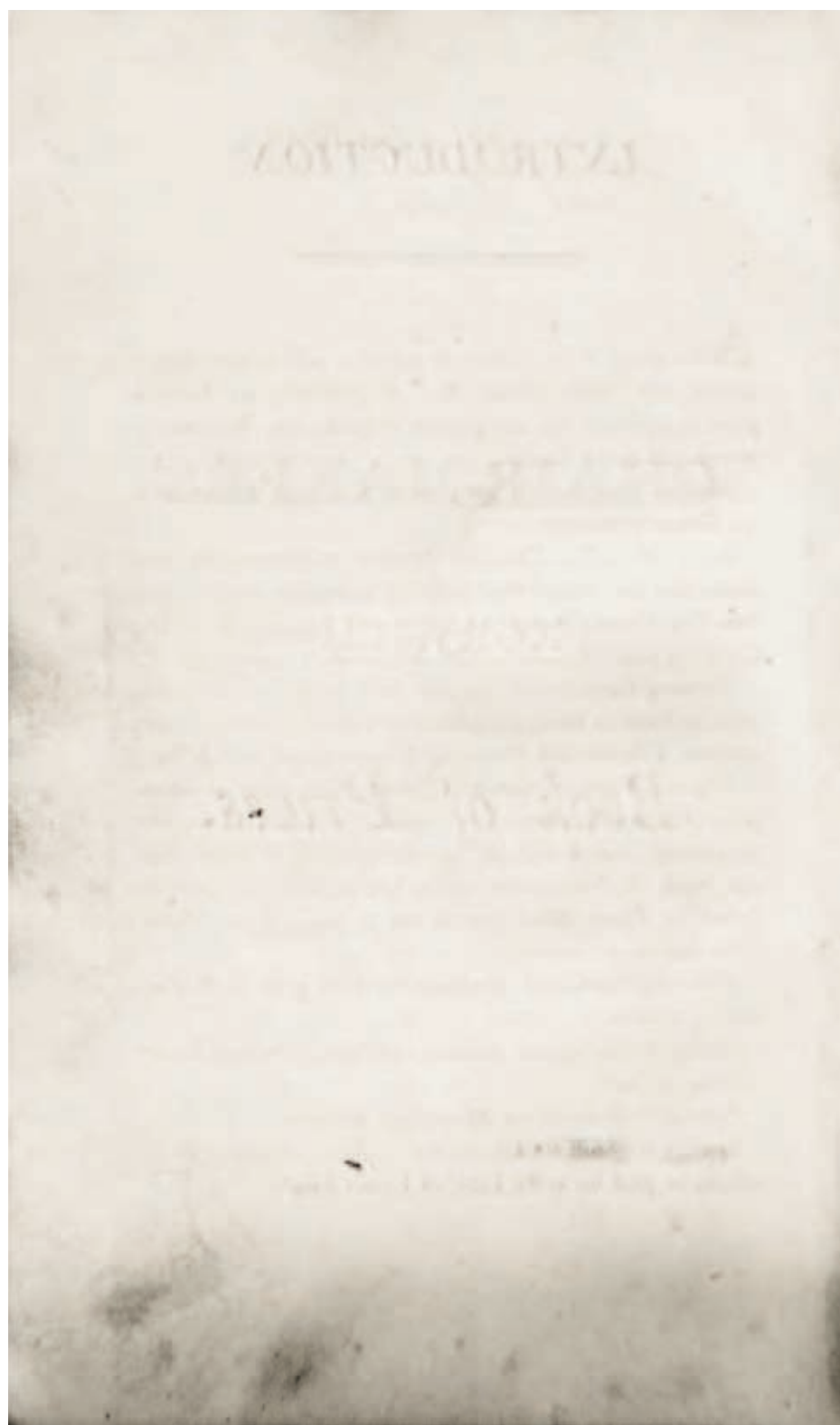
Frame start	58
Top Hollow in front	2.4
Hollow Corner Top	0.2
Terming Back feet	0.5
3 Terms and Oge on	0.8
Front feet	2.4
Loose seat	0.8
Sweep Rails	1.3
Tapering Back feet	0.1
Rounding Back feet	0.8
Barister and 2 plates	1.6
Cutting Rails with a hollow	0.4
Dowels	0.1
Trench Elbows with a Sweep stump	3.3
	<hr/> 213.9

*Extras in Hall Chairs*  
*Screwing on Bottom - 5 8*  
*Hand Hole - 0 3*  
*0 1 1/2*

THE  
 CHAIR-MAKERS'

NORWICH

*Book of Prices.*





## INTRODUCTION.

---

AS a guide to the following prices, it will be necessary to notice, that Chairs, Sofas, &c. of all kinds, are started as plain as possible, that any pattern of back, top, &c. may be introduced in the same.

Articles that generally occur in the Chair are mentioned in the Extras of the same.

For a Wide-Top Chair for Painting or Staining, the most extras that are inserted may be found in page 11;—for a Narrow-Top Chair, in page 14;—for a Mahogany Wide-Top Chair, in page 18;—for a Vase-Back Chair, in page 33.

Forming Pannels in Tops, with Strings, &c. or Moulding ditto, to form the same, are inserted in Tables for that purpose; Stumps, Elbows, and Moulding ditto, in pages 67, 68, 69.

It is impossible to insert every article that occurs, as the price of fashion so often varies; especially in Fancy Chairs for Japanning: that if a proper inference cannot be drawn from this Book of Prices; it is recommended, that the price be settled by Three Workmen, in the presence of the Master, or be paid for by the day.

Reducing Slabs, and working Old Stuff, to be paid for according to time.

Oiling, Polishing, and Staining of Chairs, to be paid for according to time.

Putting on Brass-Work Mouldings, the same.

Sawing out Stuff for Chairs, &c. if above an inch in thickness, to be paid for as the Table of Extras directs.

# CONTENTS.

	PAGE
KITCHEN Chair - - - - -	1
Square-Back Kitchen Chair - - - - -	2
An Elm Hollow-Seat Chair - - - - -	3
Square-Back Elm Chair - - - - -	4
Square-Back Elm Chair, with wide top - - - - -	6
An Elm Loose Seat Chair - - - - -	7
An Elm Loose Seat, Square-Back Chair - - - - -	8
An Elm Loose-Seat Chair, with wide top - - - - -	9
Matted-Seat Chair - - - - -	10
A Dressing-Room Ditto - - - - -	10
A Square-Back Dressing-Room Chair, for Painting or Staining - - - - -	11
A Beech Nail-Seat Chair for ditto - - - - -	14
A Beech Nail-Seat, Banister-Back Chair, for ditto - - - - -	17
Mahogany Nail-Seat Chair, with wide top - - - - -	18
Mahogany Loose-Seat, Wide-Top Chair - - - - -	22
Mahogany Hollow-Seat, Wood Bottomed Chair, with wide top - - - - -	23
Mahogany Square-Back Nail-Seat Chair - - - - -	23
Mahogany Square-Back, Loose-Seat Chair - - - - -	26
Mahogany Hollow Seat, Wood-Bottomed, Square- Back Chair - - - - -	26
Mahogany Nail-Seat Chair, without Top, Stay-Rail, Splats, or Banister - - - - -	27
Mahogany Nail-Seat, Banister-Back Chair - - - - -	30
Mahogany Loose-Seat, Banister-Back Chair - - - - -	32
Mahogany Hollow-Seat, Banister-Back, Wood-Bot- tomed Chair - - - - -	33
Mahogany Nail Seat, Vase-Back Chair - - - - -	33

## iii.

	PAGE
Mahogany Hollow-Seat, Wood-Bottomed, Vase-Back Chair	35
Mahogany Loose-Seat, Vase-Back Chair	36
Matted-Seat Smoking Chair	37
Elm Nail-Seat Smoking-Chair	37
Mahogany Nail-Seat Smoking-Chair	38
Beech Hall-Seat Chair, for Japanning	39
Mahogany Hall-Chair	40
Berger Chair	41
Mahogany Cabriole Chair	42
Mahogany Night-Chair	43
Elm Banister-Back Chair	44
Elm Square-Back Table-Chair	45
Mahogany Nail-Seat, Banister-Back Table-Chair	46
Mahogany Nail-Seat, Square-Back Ditto	48
Mahogany Nail-Seat, Vase-Back Table-Chair	57
Mahogany Berger Table-Chair	52
Square Stool to ditto	53
Elm Stool for a Table-Chair	53
Mahogany Stool for a Table Chair	54
Foot-Stools	55
Oval, or Octagon ditto	55
Mahogany Night-Stool	56
Nail-Seat Stool	56
Shop or Counting-House Stool	57
Camp-Stool	57
Scrowl-head Window-Stool	58
Easy Chairs	59
Bed Chair	60
Gony Cradle	60
Square Sofa	61
Square Sofa, with Scrowl Ends	62



## IV.

	PAGE
Cabriolet Sofa	63
Sofa Bedstead	63
Portable Sofa Bedstead	64
Settee	65
Couch	65
Square Back Cabriolet Chair	66
Elm Stumps and Elbows	66
Elm French Elbow	67
Mahogany Stumps and Elbows	67
Mahogany French Elbows	68
French Elbows for Japanning	69
Sinking Pannels out of the Solid	70
Forming Pannels out of the Solid	71
<i>Omitted in the Cabinet-Makers' Work.</i>	
Camp Bedstead	72
Extras Omitted in Four-Post and Tent Bedstead	73
Crib	73
Bed Steps	74

---

 CONTENTS OF THE TABLES.

- No. 1. The Price of Forming Pannels by Strings.  
 No. 2. The Price of Making and Letting in Pannels.  
 No. 3. The Price of Forming Pannels by Band.  
 No. 4. The Price of Forming Pannels by Mouldings.



## TABLE OF EXTRAS.

**ALL** fancy figures on outside or inside of banisters or splats, not inserted in other extras, to be paid for according to time; either in mahogany or other hard wood.

	£.	s.	d.
Round buttons between splats, prepared by the turners, or relieving splats, each	0	0	0 $\frac{1}{2}$
Turned spindles, each spindle	0	0	1
Relieving bars of banisters or splats, each bar	0	0	0 $\frac{1}{2}$
Mitres in reeds not inserted, each mitre	0	0	0 $\frac{1}{2}$
Reeding back or front feet, when turned, or pillars, at per dozen reeds	0	0	9
Veneering sides of straight-seat rail, each side to form a rabbit	0	0	0 $\frac{1}{2}$
Ditto sweep rails, each side	0	0	1
Commode front rail ditto	0	0	2
Veneering straight-seat rails, side and edge, for for caning or canvassing, each rail	0	0	1 $\frac{1}{2}$
Ditto for sweep-seat rails, plain sweep, each rail	0	0	3
Commode front-rail ditto	0	0	4
Cutting the corners of chairs, to form a rabbit for caning or canvassing, each chair	0	0	1
SAWING chair, or sofa back feet, each foot	0	0	0 $\frac{1}{2}$
Scrowl upper-end ditto, each	0	0	1 $\frac{1}{4}$
Back feet, with a toe	0	0	1
Sweep-seat rails, plain sweep, each	0	0	0 $\frac{1}{2}$
Commode ditto	0	0	1
Sawing a wide top	0	0	1
Sofa front rail, plain sweep, or elliptic	0	0	4
Cabriole sofa, back rail	0	0	4
Side rails for ditto, each	0	0	2

					£.	s.	d.
Corner pieces for cabriole sofa	-	-	-	-	0	0	4
Stretchers to ditto, each	-	-	-	-	0	0	0 $\frac{1}{2}$
Scrowls for ditto, each	-	-	-	-	0	0	1 $\frac{1}{2}$
Elbow and stump, each	-	-	-	-	0	0	0 $\frac{1}{4}$
Sawing stuff, either mahogany or other wood, from inch and quarter to two inches, at per score feet	.	.	.	.	0	0	3
Ditto two inches and a half thick, at per score feet	-	-	-	-	0	0	4

## ERRATA.

PAGE LINE

- 6 27 *for 7d. read 1d.*  
 8 22 *omit reading No. 6.*  
 9 25 *for 1s. 6d. read 1s. 9d. \**  
 10 2 *omit reading No. 6.*  
 10 9 *for 2d. read 1d.*  
 13 20 *for 6d. read 7d.*  
 13 21 *for 8d. read 9d.*  
 14 10 *for 3d. read 2 $\frac{1}{2}$ d.*  
 18 6 *for 4d. read 3d.*  
 31 21 *for  $\frac{1}{2}$ d. read 1d. \**  
 36 21 *for 8d. read 9d.*  
 39 21 *for each rail read each dowel*  
 44 4 *for 6d. read 5d.*  
 46 3 *for 2d. read 1d.*  
 50 20 *for extra read reed*  
 58 5 *for each joint read each inch*  
 63 9 *for 2d. read 2s.*  
 63 10 *omit reading extra*  
 65 11 *for scrowl beads read scrowl heads*  
 66 11 *for 6d. read 1s. 6d.*

# CHAIR-MAKERS'

## Norwich

### BOOK OF PRICES.

#### A KITCHEN CHAIR, No. 1.

FOR framing and sweeping a kitchen chair, elm, ash, beech,  
or walnut-tree, flat seat, with two rails of a side; single  
pitch back feet, plain banister and pedestal, plain  
Marlbro' feet. - - - - £.0 2 0

#### EXTRAS.

For a vase back top - - - -	0 0 4
Working the pedestal with plain hollow, each	0 0 1
If with quarter round and plain hollow, each	0 0 1½
Round upper ends to back feet, each chair	0 0 1
Double pitch, or round lower ends, each ditto	0 0 2
Each extra rail to single pitch back feet -	0 0 1½
Each ditto to double pitch ditto - -	0 0 2
Tapering front feet, each side - - -	0 0 0½
Working an oval, or quarter round on edge of bottom - - - -	0 0 2
For cutting holes in banister, each hole -	0 0 1



	£.	s.	d.
If cut into the top, each ditto - - -	0	0	1½
For other extras—See tables.			

### A SQUARE BACK KITCHEN CHAIR, No. II.

FOR framing a square back Kitchen Chair, elm, ash, beech, or walnut-tree, with straight top, and stay rail; single pitch-back feet, plain tapered above the seat; flat seat, with two rails of a side; plain Marlbro' feet, without banister, or splats - - - £. 0 2 0

#### EXTRAS.

For a top, hollow in front, not exceeding one inch in hollow - - -	0	0	2
Stay rail, the same hollow in front - -	0	0	1
If top be more than inch in the hollow, not exceeding inch and half - - -	0	0	3
Stay rail, the same hollow in front - -	0	0	1½
So on in proportion to the hollow of each top and stay rail			
Double pitch-back feet, each chair - -	0	0	2
Top with one plain sweep - - -	0	0	4
Top with a plain sweep and break at the corners - - -	0	0	5
Top with hollow corners, and straight in the middle - - -	0	0	5
Stay rail, with one plain sweep - - -	0	0	2
Round upper ends to back feet, each chair -	0	0	1
Cutting up ditto, with a hollow under stay rail, each chair - - -	0	0	2



	£.	s.	d.
Framing straight splats, not exceeding one inch in joint, each splat - -	0	0	1½
If splats are more than one inch in joint, not exceeding two inches in ditto -	0	0	2
And so on in proportion, according to the width of each splat.			
If splats are round in front, each splat extra from straight ones - - -	0	0	0½
Cutting holes in splats, each hole - -	0	0	1
Outsides of ditto to be charged for according to the work there is in them.			
If these chairs are made of cherry-tree, charge extra from other common wood, in each shilling - - - -	0	0	1½
For other extras—See tables.			

### AN ELM HOLLOW-SEAT CHAIR.

FOR framing and sweeping a hollow seat, wood-bottom chair; elm, ash, beech, or walnut-tree, with two rails on each side, single pitch back feet, plain banister, with straight joint in the top, straight in front, plain Marlbro' feet - - - -

£. 0 2 4

### EXTRAS.

For a vase top - - - -	0	0	4
Tops hollow in front, if the hollow do not exceed one inch, each - - -	0	0	2
If the tops are more than an inch in hollow, not exceeding one inch and a half, each	0	0	3

	<i>£</i>	<i>s.</i>	<i>d.</i>
And so on in proportion to the hollow of each top.			
For a pedestal - - - - -	0	0	4
Working ditto with a hollow - - -	0	0	3
If with a quarter round and hollow -	0	0	3
Round upper and to back foot, each chair	0	0	1
Double pitch, or round lower end, each ditto	0	0	2
Each extra rail to single pitch-back foot	0	0	1½
Each ditto to double pitch, or round lower ends, ditto - - - - -	0	0	2
Tapering feet, each side - - - - -	0	0	0½
Working quarter-round, or ovalo, on edge of bottom - - - - -	0	0	3
Cutting holes in banisters, each hole -	0	0	1
If holes are cut into the top, each ditto -	0	0	1½
Banister round in front - - - - -	0	0	1
If the chairs are made of cherry-tree, to be charged extra from other common wood in each shilling - - - - -	0	0	1½
For other extras—See tables.			

### A SQUARE-BACK ELM-CHAIR.

FOR framing a square back, stay rail, hollow seat, wood-bottomed chair; elm, ash, beech, or walnut-tree, with straight top and stay rail, single pitch back feet, plain taper above the seat, with two rails on a side, plain Marlbro' feet, without banisters or splats *£*.0 2 6

## EXTRAS.

	<i>£.</i>	<i>s.</i>	<i>d.</i>
For a top hollow in front, not exceeding one inch in hollow - - - -	0	0	2
Stay rail, the same hollow in front -	0	0	1
If top is more than one inch in hollow, not ex- ceeding an inch and a half -	0	0	3
Stay rail, the same hollow - - - -	0	0	1½
And so on in proportion to the hollow of each top and stay rail.			
Top with one plain sweep - - - -	0	0	4
Top with one sweep, and breaks at corners	0	0	5
Ditto with hollow corners, straight in the mid- dle - - - - -	0	0	5
Stay rail, with one plain sweep - - -	0	0	2
Round upper ends to back feet, each chair -	0	0	1
Cutting up back feet, with hollow under stay rail, each chair - - - -	0	0	2
Straight splats, not exceeding one inch in joint, each - - - - -	0	0	1½
If more than inch in joint, not exceeding two inches, each ditto - - - -	0	0	2
And so on in proportion, according to the width of each splat.			
For double pitch, or round lower ends to back feet, each chair - - - - -	0	0	2
Each extra rail to single pitch back feet -	0	0	1½
Each ditto to double pitch, or round lower end	0	0	2
For other extras—See tables.			



## A SQUARE-BACK ELM CHAIR, WITH WIDE TOP.

FOR framing a hollow seat, square back, stay-rail chair;  
wide top, straight in front; elm, ash, beech, or walnut-  
tree, with single pitch, and straight upper ends of back  
feet, with plain taper above the seat, with two rails  
on a side, plain Marlbro' feet, without splats or banisters

£.0 2 10

## EXTRAS.

For a top, hollow in front, not exceeding an			
inch and a quarter in the hollow	-	0 0	2½
Stay-rail, the same hollow in front	-	0 0	1½
If the top is more than inch and quarter in the			
hollow, not exceeding two inches		0 0	3½
Stay rail, the same hollow in front	-	0 0	1½
Round upper ends of back feet, each chair		0 0	1
Cutting up with a hollow, each ditto	-	0 0	2
Double pitch, or round lower ends to back feet,			
each chair	- - - -	0 0	2
Extra rails to single pitch back feet, each		0 0	1½
Ditto to double pitch, or round lower ends,			
each	- - - -	0 0	2
Straight upright or cross splats, not exceeding one			
inch in joint, each splat, single shoulder		0 0	1½
If more than one inch in joint, not exceeding			
an inch and a half, each splat	-	0 0	2
And so on in proportion for every half inch.			
For round front to splats, each splat extra from			
a straight one	- - - -	0 0	0½
Framing two straight splats, lapped together to			
form a cross	- - - -	0 0	8



	£.	s.	d.
Framing two straight splats, lapped together to form a cross, hollow in front	0	0	10
For four ogee splats, to form a gothic and diamond in the middle, to a top straight in front, each chair	0	1	9
If hollow in the front, each chair	0	2	0
For all other extras—See tables.			

### AN ELM LOOSE-SEAT CHAIR.

FRAMING and sweeping a loose-seat banister-back chair, elm, ash, beech, or walnut-tree, straight joint in top, top straight in front, single pitch back feet, with two rails on a side, straight seat rails, plain banister and pedestal, plain Marlbro' feet, with blocks in front corners

£. 0 2 8

#### EXTRAS.

For a top, hollow in front, the hollow not exceeding one inch	0	0	2
Double pitch, or round lower ends to back feet, each chair	0	0	2
Hollow seat	0	0	10
Working straight pedestal with plain hollow	0	0	2
If with hollow and quarter-round	0	0	2½
A hollow ditto, with plain hollow	0	0	2½
If with quarter-round and hollow	0	0	3
Tapering feet, each side	0	0	0½
Round upper ends to back feet, each chair	0	0	1
Banister round in front	0	0	1
For other extras—See tables.			

## AN ELM LOOSE-SEAT SQUARE-BACK CHAIR.

FRAMING a loose-seat, square-back, flay-rail chair; elm, ash, beech, or walnut-tree, straight top and flay-rail, straight in front, single pitch back feet, straight upper ends, with plain taper above the seat, with two rails on a side, straight seat-rails, plain Marlbro' feet, without banister or splats - - - £.0 2 8

## EXTRAS.

Cutting back foot up with a hollow, each chair	0	0	2
For a top, hollow in front, not exceeding one inch in the hollow - - -	0	0	2
Stay-rail, the same hollow in front - -	0	0	1
If tops are more than inch, not exceeding inch and half in the hollow - -	0	0	3
Stay-rail, the same hollow in front - -	0	0	1½
And so on in proportion to the hollow of each top and flay rail.			
Straight splats, not exceeding one inch in joint, each - - - - -	0	0	1½
If more than one inch in joint, not exceeding two inches, each - - -	0	0	2
And so on in proportion to the width of splats.			
If splats are round in front, each - -	0	0	0½
For other extras—See <del>the</del> tables.			

## AN ELM LOOSE SEAT CHAIR, WITH WIDE TOP,

FOR framing a loose-seat square-back flay rail chair, with wide top, dove-tailed on the back feet; elm, ash, beech, or walnut-tree; straight top and flay rail; straight in front; single pitch-back feet; straight upper ends, with plain taper above the seat, with two rails of a side; straight seat rails; plain Marlbro' feet, without banister or splats.

£. s. d. 2 11

## EXTRAS.

For a top hollow in front, not exceeding one inch in hollow - - -

0 0 2½

Stay rail the same, hollow in front - -

0 0 1½

If the top is more than inch in hollow, not exceeding two inches - - -

0 0 3½

Stay rail, the same hollow in front - -

0 0 1½

And so on in proportion to the hollow of each top and flay rail.

Straight splats, not exceeding one inch in joint,

0 0 1½

If more than inch, not exceeding two inches, each ditto - - -

0 0 2

And so in proportion to the width of each splat.

If splats are round in front, each - -

0 0 0¼

For two straight splats, lapped together to form a cross - - -

0 0 8

If ditto is hollow in front - - -

0 0 10

For four ogee splats, to form a gothic and diamond in the middle to a straight top

0 1 6

For ditto to a hollow top - - -

0 1 8



	<i>£.</i>	<i>s.</i>	<i>d.</i>
Cutting up back feet with a hollow, each chair	0	0	2
For other extras—See table			

### A MATTED SEAT CHAIR.

FOR framing and sweeping a matted seat chair, elm, ash, beech, or walnut-tree, with single pitch-back feet, two rails of a side, straight seat rails, plain banister and pedestal; plain Marlbro' feet

- - - 0 2 0

#### EXTRAS.

For a top, hollow in front, not exceeding one inch	-	-	-	-	-	0	0	2
Working pedestal with a plain hollow	-					0	0	1
Each extra rail to single pitch-back feet	-					0	0	1½
Each ditto to double pitch, or round lower ends	-	-	-	-	-	0	0	2
For other extras—See tables.								

### A DRESSING-ROOM CHAIR.

FOR framing a matted seat chair, for staining or painting single pitch-back feet, straight upper ends, with two rails of a side, straight seat rails, with plain slips, plain Marlbro' feet, without top, slay rail, banister or splats.

£.0 1 6



## EXTRAS.

	£.	s.	d.
For an over-seat, framed on the front feet -	0	0	2
Sweep seat rails, if the sweep do not exceed half inch, each rail - - -	0	0	1
If more than half inch, not exceeding one inch, each ditto - - - - -	0	0	1½
Every half more than inch, in the sweep of the rail, each ditto, extra - - -	0	0	0½
Framing straight splats straight in front, not exceeding three quarters of inch in width, half inch thick, single shoulders	0	0	1
If more than three-quarters of an inch in width not exceeding inch and half, each ditto	0	0	1½
For every three-quarters of inch more than inch and half in width, each splat extra	0	0	0½
Framing straight splats, half inch width, not exceeding inch in the hollow, each splat, single shoulder - - -	0	0	1½
If more than half inch in width, not exceeding one inch, each ditto - - -	0	0	2
If more than inch in width, not exceeding one inch and half, each ditto - -	0	0	2½
If more than inch and half, not exceeding two inches, each ditto - - - -	0	0	3
If the splats are more than inch in hollow, not exceeding two inches, each ditto, extra	0	0	0½
And so on in proportion to the width of each splat.			

# A SQUARE BACK DRESSING-ROOM CHAIR, WITH WIDE TOP FOR PAINTING, OR STAINING.

FOR framing a square-back matted-seat stay-rail chair, with wide top, not exceeding two inches and a quarter in width; dove-tailed on the back feet, straight in front; single pitch-back feet, straight upper ends; plain taper above the seat; two rails of a side, straight seat rails, with plain slips, plain Marlbro' feet, without splats or banister stay-rail; to be single shouldered,

£. 0 = 0

If made with straight top, the same width as back feet, deduct for wide top - 0 0 3

## EXTRAS.

For an over seat, extra from seat rails framed into front feet - - - -	0 0 2
For sweep seat rails, if the sweep do not exceed half an inch, each rail - - - -	0 0 1
If more than half an inch in sweep, not exceeding one inch, each ditto - - - -	0 0 1½
For every half inch more than one inch in sweep, each rail, extra - - - -	0 0 0½
Round upper ends to back feet, each chair - - - -	0 0 1
For double pitch, or round lower ends of back feet, each chair - - - -	0 0 2
Tapering feet, each side - - - -	0 0 0½
For a top, hollow in front, framed on back feet, if the hollow do not exceed one inch, - - - - - - - -	0 0 2
Stay rail, the same, hollow in front - - - -	0 0 1
Top with one plain sweep - - - - - - - -	0 0 4

	£.	s.	d.
Top with plain sweep, and break at corners	0	0	5
Hollow corner top and straight in the middle	0	0	5
A plain banister, not exceeding seven inches in joint, straight joint - - -	0	0	4
Sweep front to ditto - - -	0	0	2
A top dove-tailed on back feet, not exceeding two inches and quarter in width, and one inch hollow in front - -	0	0	2
Stay rail, the same hollow in front - -	0	0	1
If the top is more than an inch, not exceeding an inch and half in hollow - -	0	0	3
Stay rail the same hollow - - -	0	0	1½
And so on in proportion to each top and stay- rail.			
If stay rails are double shouldered, each rail extra - - - - -	0	0	1
Framing straight, upright or cross, splats, straight in front, single shoulders, not exceeding half inch in width, each splat	0	0	1
If more than half an inch, not exceeding an inch and quarter, each ditto - -	0	0	1½
And so in proportion to the width of each splat.			
If ditto are double shouldered, each extra -	0	0	0½
Framing straight splats half an inch in width, not exceeding one inch hollow in front, each splat, single shouldered - -	0	0	1½
If more than half an inch in width, not exceed- ing one inch and quarter, each ditto	0	0	2
If more than an inch and quarter, not exceed- ing two inches, each ditto - -	0	0	2½
If with double shoulders, each splat, extra -	0	0	0½
If the splats are more than an inch in hollow,			



	<i>£.</i>	<i>s.</i>	<i>d.</i>
not exceeding an inch and a half, each			
ditto extra - - - - -	0	0	0½
And so in proportion to the width and hollow			
of each splat.			
Framing splats with round joint, not exceed-			
ing one inch in ditto, each joint extra			
from straight - - - - -	0	0	0½
If more than an inch, not exceeding two			
inches in joint, each ditto - - -	0	0	0½
Framing splats with a hollow joint, not exceed-			
ing an inch in ditto, each joint extra			
from straight - - - - -	0	0	0½
If more than an inch, not exceeding two inches			
in joint, each ditto - - - - -	0	0	0½
And so on in proportion to each joint.			
Framing cross splats into upright ones, to be			
charged the same as splats framed into			
back feet.			
Framing two straight splats, straight in front,			
lapped together to form a cross - -	0	0	3
If hollow in front - - - - -	0	0	3
Four ogee splats, straight in front, to form a			
gothic and diamond in the middle -	0	1	6
If to a top, hollow in front - - -	0	1	6
All other pattern splats to be paid for according			
to the work that is in them.			
For other extras— <i>See tables</i>			



## A BEECH NAIL-SEAT CHAIR, FOR JAPANNING.

For framing a nail-seat square-back Chair, with straight top and stay rail; straight in front; double pitch, or round lower ends, and straight upper ends of back seat; straight seat rails; plain Marlbro' or turned feet; straight braces, without splats, or lower rails,

£. s. d.  
0 2 0

## EXTRAS.

A top, hollow in front, if the hollow do not exceed an inch	- - - -	0 0 2
Stay rail, the same hollow in front	- -	0 0 1
Tops more than an inch in the hollow, not exceeding an inch and a quarter, each	-	0 0 2 $\frac{1}{2}$
Stay rail, the same hollow in front	- -	0 0 1 $\frac{1}{2}$
And so on in proportion to each top and stay rail.		
Round upper ends of back feet, each chair	-	0 0 1
Cutting up back feet, with a hollow under stay rail, each chair	- - - -	0 0 2
Framing straight, upright or cross, splats; straight in front, single shouldered, not exceeding half an inch in width, each splat	- - - -	0 0 1
More than half an inch in width, and not exceeding an inch and a quarter, each ditto	- - - -	0 0 1 $\frac{1}{2}$
And so on in proportion to the width of each splat.		
If ditto are double shouldered, each splat extra		0 0 0 $\frac{1}{2}$
Framing splats half an inch in width, not exceeding one inch, hollow in front, each splat single shouldered	- -	0 0 1 $\frac{1}{2}$

	<i>£.</i>	<i>s.</i>	<i>d.</i>
More than half an inch in width, not exceeding one inch and a quarter, each ditto	0	0	2
More than an inch and a quarter, not exceeding two inches, each ditto	0	0	2½
Double shoulders, each splat extra	0	0	0½
These splats, more than an inch in hollow, not exceeding an inch and a half, each ditto extra	0	0	0½
And so on in proportion to the hollow and width of each splat.			
For other extras— <i>See tables.</i>			
Cross-splats framed into upright ones are to be charged the same as when framed into the back feet.			
Each extra straight stay-rail, double shouldered	0	0	3
For framing splats with round joint, not exceeding one inch ditto, each joint extra from straight ones	0	0	0½
More than one inch, not exceeding two inches in joint, each ditto	0	0	0½
Framing straight splats with a hollow joint, not exceeding an inch in ditto, each joint extra from straight	0	0	0½
If more than an inch, not exceeding two inches in joint, each ditto	0	0	0½
And so on in proportion to the width of each joint.			
Round upper ends to back feet, each chair	0	0	1
Scrowl upper ends to back feet, each chair	0	0	9
Cutting up ditto, with a hollow under stay rail, each chair	0	0	3
Two straight splats, hollow in front, lapped to-			

	<i>£.</i>	<i>s.</i>	<i>d.</i>
gether, to form a cross between two stay rails	0	0	6
Four ogee splats, to form a gothic, and diamond in the middle, lapped into the back part	0	1	4
If more than four ogee splats, each	0	0	4
A hollow seat	0	0	4
Sweep seat rails, one plain sweep, each	0	0	1½
A commode front ditto	0	0	2
An oval seat	0	1	0
Bell seat	0	1	0
Rabbiting the sides of straight rails, each chair	0	0	2
Kneeing ditto	0	0	1
Rabbiting sweep rails on the sides, plain sweep, each chair	0	0	3
Kneeing ditto, each chair	0	0	2
Rabbiting the sides of the rails of an oval seat, each chair	0	0	4
Kneeing ditto	0	0	1
Rabbiting the sides of rails of a bell seat, each chair	0	0	5
Kneeing ditto	0	0	1
Rabbiting the top edge of straight rails, for caning or stuffing, each chair	0	0	3
Corners of front feet to ditto, each chair	0	0	1
Rabbiting top edge of sweep rails, plain sweep, each chair	0	0	4
Corners of front feet to ditto	0	0	1
Rabbiting the top edge of an oval seat, each chair	0	0	5
Bell seat ditto	0	0	6
Corners of front feet of ditto, each chair	0	0	1
A loose seat, extra from a nail seat, straight seat rail	0	0	2
Sweep seat rails, plain sweep, extra from			



	<i>£.</i>	<i>s.</i>	<i>d.</i>
straight, straight loose seat, seat included, each seat-rail - - - - -	0	0	5
Commode front rail, extra from a plain sweep seat included - - - - -	0	0	3
Hollow loose seat, straight sides and front, extra from a common loose seat - - -	0	0	9
Hollow loose seat, straight side, plain sweep- front rail, extra from a straight front	0	0	6
Tapering feet, each side - - - - -	0	0	0½
For other extras— <i>See tables.</i>			

### A BEECH NAIL-SEAT CHAIR, FOR JAPANNING.

FRAMING a stay-rail banister back chair, straight joint in top, and stay-rail, straight in front; plain banister double pitch or round lower ends, and straight upper ends of back feet; straight seat rails; plain Marlboro' or turned feet; straight braces, without lower rails,

*£.* 0 2 4

### EXTRAS.

For shaping top, back feet, or stay rails, to be paid for according to the work that is in them.

Top, hollow in front, if the hollow do not exceed one inch in front - - -	0	0	2
Stay rail, the same hollow in front, - - -	0	0	1
Top, with one plain sweep - - - - -	0	0	4
If ditto with one plain sweep and break at corners - - - - -	0	0	5

## 18

Top, with hollow corners, and straight in the middle	- - - - -	0 0 5
If ditto with plain sweep in the middle	-	0 0 6
If splats to this chair, deduct for banister	-	0 0 4
If made with a straight wide top, dove-tailed on back feet, add for top	- -	0 0 3
For other extras—See bench nail seat chair for japanning, p. 14.		

### A MAHOGANY NAIL SEAT CHAIR, WITH WIDE TOP.

FRAMING a mahogany nail-seat, flay-rail, square-back chair, straight top, dove-tailed on back feet; top, flay-rail and back feet straight in front, double pitch or round lower ends, straight-seat rails; plain Masbro' feet, straight braces, without banister, splats, or lower rails.

£.0. 8

## EXTRAS.

For a top, hollow in front, the hollow not exceeding one inch and quarter	- - -	0 0 3
Stay rail, the same hollow in front	- -	0 0 1½
If tops are more than an inch and a quarter in hollow, not exceeding two inches, each	- -	0 0 4
Stay-rail, the same hollow	- - -	0 0 2
Framing straight upright splats or turned pillars, not exceeding one inch in joint, single shoulder, each	- - -	0 0 1½
If splats are more than one inch in joint, not exceeding an inch and three-quarters, each	- - -	0 0 2

L. 1. d.

And so on in proportion to the width of each  
splat.

If these splats or pillars are double shouldered,  
each extra - - - - -

o o o 1

Framing upright splats, not exceeding two  
inches and a half in joint, into a top,  
hollow in front, the hollow not to ex-  
ceed two inches, each splat - - -

o o 2 1/2

If splats are more than two inches and a half  
in joint, not exceeding three inches,  
each ditto - - - - -

o o 3

And so in proportion to the width of each  
splat.

If splats are round in front, each splat extra

o o o 1/2

Splats framed into a top, hollow in front, not  
exceeding two inches and half in joint,  
double shoulders, each splat - - -

o o 3 1/2

If splats are more than two inches and a half  
in joint, not exceeding three inches,  
each ditto double shouldered - - -

o o 4

And so on in proportion to the width of each  
double shouldered splat.

Framing two straight splats, lapped together to  
form a cross - - - - -

o o 10

Ditto, hollow in front - - - - -

o 1 o

Framing four ogee splats to form a gothic, and  
diamond in the middle, to a top straight  
in front - - - - -

o 2 3

Framing ditto to a top hollow in front - - -

o 2 6

Round upper ends to back feet, each chair - - -

o o 1

Cutting up back feet with a hollow, each chair

o o 2

Sweep seat rails, plain sweep, each rail - - -

o o 1 1/2

For a commode front rail - - - - -

o o 2



	<i>£.</i>	<i>s.</i>	<i>d.</i>
Hollow seat - - - - -	0	0	4
Lower rails, each rail, single shoulder -	0	0	2
If double shoulders, each ditto - - -	0	0	3
Screw braces to straight seat rails, each brace	0	0	1
Ditto to sweep rails, each - - - -	0	0	1½
Dove-tailed braces to straight seat, each brace	0	0	2
Ditto to a hollow seat, each - - - -	0	0	3
Rabbeting a straight back rail - - - -	0	0	0½
Hollow ditto - - - - -	0	0	1
Veneering seat rails to shew a rabbit, each rail	0	0	0½
Glueing quarter stuff on straight seat rails, to shew a rabbit, each rail - - - -	0	0	1
Glueing quarter stuff on sweep seat rails, plain sweep, each rail - - - - -	0	0	2
Glueing quarter stuff on the front of a com- mode front rail - - - - -	0	0	6
Glueing ditto on a hollow seat rail, straight in front - - - - -	0	0	2
If ditto is round in front, each ditto - - -	0	0	3
Glueing inch stuff on lower edge of straight seat rails for moulding, each rail -	0	0	1
Ditto on sweep rails, each - - - -	0	0	1½
Moulding, straight seat rails, with flat ground and two beads, book-edge or sand- ground moulding, each rail - - -	0	0	1
Returning the moulding round front feet, each chair	0	0	4
Kneeing ditto, each chair - - - - -	0	0	2
Working the same mouldings round sweep seat rails, plain sweep, each rail - - -	0	0	1½
Returning the moulding round front feet of ditto - - - - -	0	0	5
Kneeing ditto, each chair - - - - -	0	0	2

	<i>L.</i>	<i>s.</i>	<i>d.</i>
Working the same mouldings on a commode			
front rail - - - - -	0	0	4
Working the same mouldings on a hollow			
seat, front rail, straight or plain sweep			
in front - - - - -	0	0	3
Beading back feet and stay rail, outside and			
inside, each chair - - - - -	0	0	3
Working back edge moulding on back feet			
and stay rail, each chair - - - - -	0	0	9
If with sand-ground, or toad-back moulding -	0	0	11
Working any of these mouldings on stay rails,			
each rail - - - - -	0	0	3
Reeding straight-back feet, without fops, at			
per dozen - - - - -	0	0	6
If with fops, each fop to each reed, extra -	0	0	0½
If reeds are taper on back feet, flat in front,			
without fops, at per doz - - - - -	0	0	9
If with fops, each fop to each reed extra -	0	0	0½
If back feet and stay rail is reeded, each reed,			
mitres included - - - - -	0	0	4½
Working a flat ground moulding on two splats,			
to form a cross, hollow in front -	0	0	8
The moulding mitred in the middle, extra	0	0	3
Letting in a patra - - - - -	0	0	1
Reeding four ogree splats, to form a gothic,			
and diamond in the middle, each reed	0	0	2
Tapering feet, each side - - - - -	0	0	0½
Therming front feet, with a hollow and square			
at bottom, each side - - - - -	0	0	1
All other extra work to be paid for according			
to the work that is in them.			
Working a moulding front feet, either			

	£.	s.	d.
taper or thermed, with book-edge or sand-ground ditto, without flops, each side - - - - -	0	0	2
If with flops, each flop - - - - -	0	0	0½
If with toad back ditto, each side extra - - - - -	0	0	0½
Working taper reeds on front feet, without flms, at per dozen - - - - -	0	0	9
If with flops, each flop to each reed, extra - - - - -	0	0	0½
For other extras—See tables.			

### A MAHOGANY LOOSE-SEAT, WIDE TOP CHAIR.

FRAMING a mahogany loose-seat, flay rail, square-back chair, straight top, dove-tailed on back feet; top, flay-rail, and back feet straight in front; double-pitch or round lower ends; straight seat rails; plain Marlbro' feet, blocks in front corners, without banister, splats, or lower rails, - - - - - £ 0 3 6

#### EXTRAS.

For a hollow seat - - - - -	0	1	0
A hollow seat, with a plain sweep front rail - - - - -	0	1	8
Sweep seat rails, each sweep rail extra from straight ones - - - - -	0	0	6
A commod front rail ditto - - - - -	0	0	9
Veneering back rails, each side or edge - - - - -	0	0	0½
For other extras—See wide-top, nail-seat chair.			



# A MAHOGANY HOLLOW-SEAT, WOOD-BOTTOMED CHAIR, WITH WIDE TOP.

FRAMING a mahogany hollow-seat, wood-bottomed, flay-rail, square-back chair, straight top, dove-tailed on back feet; top, flay-rail, and back feet, straight in front; double-pitch or round lower ends; straight seat rails; plain Marlboro' feet, with lower rails, without banister or splat - - - £.0 3 10

If with single pitch-back feet, deduct for each

chair - - - - - 0 0 0

## EXTRAS.

Blocking on bottoms, each chair - - - 0 0 4

Each extra rail to single pitch-back feet - - - 0 0 1

Each ditto to double pitch, or round lower ends - - - 0 0 2

Caning up back feet, with a hollow under flay-rail, each chair - - - 0 0 2

Round upper ends to back feet, each chair - - - 0 0 1

Tapering feet, each side - - - 0 0 0

For other extras—See mahogany nail-seat, wide top chair.

# MAHOGANY SQUARE-BACK, NAIL SEAT CHAIR.

FOR framing a mahogany nail-seat, flay-rail, square-back chair, straight top and flay-rail; double pitch, or round lower ends, and straight upper ends of back feet; plain taper above the seat; straight seat rails; plain Marlboro' feet; straight braces, without banister, splat or lower rail, - - - £.0 2 3

## EXTRAS.

	£.	s.	d.
For a top, hollow in front, not exceeding one inch in the hollow - - -	0	0	3
Stay rail, the same hollow in front - -	0	0	1
Top, with one plain sweep - - -	0	0	4
Top, with one plain sweep, and break at corners	0	0	6
Hollow-cornered top, straight in the middle	0	0	6
Sweep stay-rail, one plain sweep - -	0	0	3
Straight upright splats, not exceeding one inch in joint - - - - -	0	0	1½
More than an inch in joint, not exceeding one inch and a half, each ditto - -	0	0	2
More than an inch and a half in joint, not ex- ceeding two inches, each ditto -	0	0	2½
And so on in proportion to the width of each splat.			
Splats, round in front, each splat extra -	0	0	0½
Sweep seat rails, one plain sweep, each -	0	0	1½
A commode front rail, each - - -	0	0	2
Hollow seat - - - - -	0	0	4
Rabbeting a straight back-rail - - -	0	0	0½
Hollow ditto - - - - -	0	0	1
Slip to ditto - - - - -	0	0	1
Veneering ditto - - - - -	0	0	0½
Lower rails, single flouthered, each rail -	0	0	2
Cutting up back seat with a hollow, each chair	0	0	2
Tapering feet, each side - - - - -	0	0	0½
Rounding a back part, with straight stay-rail and top, or top with one plain sweep	0	0	6
Rounding ditto, with hollow cornered top, or top with plain sweep, and break at corners - - - - -	0	0	8

	<i>£.</i>	<i>s.</i>	<i>d.</i>
Beading a back part, with straight top and flay-rail, outside and inside, or top with one plain sweep - - - -	0	0	4
Beading ditto with hollow-cornered top, or top with one plain sweep and break at corners - - - -	0	0	6
Moulding back part with straight top and flay-rail, with book-edge moulding -	0	1	0
Ditto with sand-ground moulding - -	0	1	2
Ditto with toad-back moulding - - -	0	1	3
Moulding back part with one plain sweep in the top, and straight flay-rail, with book-edge moulding - - -	0	1	2
Ditto with sand-ground moulding - -	0	1	4
Ditto with toad-back moulding - - -	0	1	5
Moulding ditto with hollow cornered top, or top with one plain sweep, and break at corners, with book-edge moulding -	0	1	3
Ditto with sand-ground moulding - -	0	1	5
Ditto with toad-back moulding - - -	0	1	8
Reeding straight upright splats, at per dozen reeds - - - -	0	0	4
Reeding taper splats, without flops, at per dozen - - - -	0	0	9
If reeds are flopped, each flop to each reed	0	0	0½
Moulding straight splats, with book-edge or sand-ground moulding, each splat -	0	0	1½
For other extras—See <i>Tables</i> .			



### A MAHOGANY SQUARE-BACK LOOSE-SEAT CHAIR.

FRAMING a mahogany loose-seat, stay-rail, square-back chair, straight top, and stay rail, double-pitch or round lower ends, and straight upper ends of back feet; plain taper above the seat; straight seat rails; plain Marlbro' feet; blocks in front corners, without banister, splats or lower rails - - £.0 3 1

#### EXTRAS.

For a hollow seat	- - - - -	0 1 0
Hollow seat, with a plain sweep front rail	-	0 1 8
Sweep seat rails, each sweep rail extra from straight ones	- - - - -	0 0 6
A comode front rail	- - - - -	.0 0 9
Veneering back rails, each side or edge	-	0 0 0½

For other extras—*See nail-seat, square-back chair.*

### A MAHOGANY HOLLOW-SEAT, WOOD-BOTTOMED, SQUARE-BACK CHAIR.

FRAMING a mahogany hollow-seat, wood-bottomed, stay-rail, square-back chair, straight top and stay-rail; double pitch, or round lower ends, and straight upper ends of back feet; plain taper above the seat; straight seat rails; plain Marlbro' feet, with lower rails, without banister, or splats - - £.0 3 5

#### EXTRAS.

If with single pitch-back feet, deduct for each chair 0 0 2

	£.	s.	d.
Blocking on bottoms, each chair - -	0	0	4
Cutting up back feet with a hollow under stay-rail, each chair - - - -	0	0	2
Round upper ends to back feet, each chair	0	0	1
Tapering feet, each side - - - -	0	0	0½
For other extras—See <i>mahogany square-back, nail-seat chair.</i>			

### A MAHOGANY NAIL-SEAT CHAIR, WITHOUT TOP, STAY-RAIL, SPLATS, OR BANISTER.

FOR framing a mahogany nail-seat chair, without top, stay-rail, splats, or banister; double-pitch or round lower ends, and straight upper ends of back feet; plain taper above the seat, straight seat rails; plain Marlbro' feet; straight braces, without lower rails,

£. 0 1 7

#### EXTRAS.

For framing straight splats across the back, straight in front, not exceeding three quarters of an inch in joint, each splat single shouldered - - - -	0	0	1½
If splats are more than three-quarters of an inch in joint, not exceeding one inch and a quarter, each ditto - - -	0	0	2
If more than one inch and a quarter in joint, not exceeding one inch and three-quarters, each ditto - - -	0	0	2½
And so on in proportion to the width of each splat.			

	<i>£.</i>	<i>s.</i>	<i>d.</i>
If ditto are double-shouldered, each splat extra - - - - -	o	o	o $\frac{1}{2}$
Framing straight splats across the back, not ex- ceeding three-quarters of an inch in width, and not more than one inch, hollow in front, single shouldered, each splat - - - - -	o	o	o
If splats are more than three quarters of an inch, not exceeding one inch and a quarter in width; not more than one inch, hollow in front; each splat -	o	o	o $\frac{1}{2}$
If more than an inch and a quarter, not exceed- ing an inch and three-quarters in width, and not more than one inch, hollow in front, each splat - - - - -	o	o	3
If more than one inch, and three quarters in width, not exceeding two inches and a quarter, not more than one inch in hollow, each ditto - - - - -	o	o	3 $\frac{1}{2}$
If ditto are double shouldered, each ditto extra	o	o	o $\frac{1}{2}$
And so on in proportion to the width of each splat.			
Splats, more than one inch, hollow in front, not exceeding one inch and a half, each splat extra - - - - -	o	o	o $\frac{1}{2}$
And so on in proportion to the hollow of each splat.			
Beading outsides of ditto, each splat - - -	o	o	o $\frac{1}{2}$
Moulding ditto with book-edge, or flat-ground moulding, not exceeding one inch in width, without stops, each splat -	o	o	2



	<i>£.</i>	<i>s.</i>	<i>d.</i>
If with stops, each stop - - - -	0	0	0 $\frac{1}{2}$
Ditto with road-back moulding, each splat	0	0	2 $\frac{1}{2}$
If ditto with stops, each stop, - - -	0	0	0 $\frac{1}{2}$
Reeding ditto, at per dozen reeds - -	0	0	6
If with stops, each stop to each reed extra -	0	0	0 $\frac{1}{2}$
For cutting square holes in splats, each hole	0	0	1
Beading ditto inside - - - -	0	0	3
If ditto are beaded inside and outside, each splat - - - -	0	0	4
Working a moulding round ditto, with flat- ground or book-edge moulding, each moulding to each hole - - -	0	0	8
Working reeds round each hole, each reed, mitres included, - - - -	0	0	4
Cutting holes in splats, with round corners and square at each end, each hole -	0	0	2
Beading round inside of ditto, each hole -	0	0	3
Cutting holes in splats to form diamonds, each hole - - - -	0	0	1
If ditto are cut to shew a patra at each point, each hole - - - -	0	0	1 $\frac{1}{2}$
Beading each bar between each hole, each bead	0	0	0 $\frac{1}{2}$
Reeding ditto between each hole, each reed	0	0	1
Working a moulding round these splats, either book-edge, or flat-ground, each splat	0	0	8
Cutting holes in ditto to form a gothic and diamond, each hole - - -	0	0	1
Beading each bar of ditto between each hole, each bead - - - -	0	0	0 $\frac{1}{2}$
Reeding ditto, each reed, mitres included -	0	0	0 $\frac{1}{2}$
Round upper ends to back feet, each chair	0	0	1

	<i>£.</i>	<i>s.</i>	<i>d.</i>
Rounding back the top ends of back feet, each chair - - - - -	0	0	1
Beading back feet, with the head returned round the upper ends, each chair -	0	0	2
Rounding back feet, each chair - -	0	0	3
Scrowl upper ends to back feet, each chair	0	1	0
Reeding ditto, each reed without stops -	0	0	1½
Framing a top to scrowl back feet, top, hollow in front, turned at each end - -	0	0	6
Straight stay-rail, straight in front - -	0	0	4
Hollow ditto, if the hollow do not exceed one inch - - - - -	0	0	5
For other extras—See tables, and mahogany nail-seat chair, with wide top.			

### A MAHOGANY NAIL-SEAT, BANISTER-BACK CHAIR.

FOR framing and sweeping a nail-seat, banister-back chair, straight joint in top; top, and back feet straight in front; double pitch, or round lower ends, straight seat rails; plain banister; plain Marlbro' feet; straight braces, without lower rails - £. 0 2 3

#### EXTRAS.

For a top, hollow in front, not exceeding one inch and a quarter in the hollow	0	0	2
A sweep top, one plain sweep - -	0	0	4
Vase top - - - - -	0	0	5

	£.	s.	d.
Cutting holes in banister, each hole - - -	0	0	1
If holes of banister are cut into the top, each hole - - - - -	0	0	1½
A hollow seat, lower joint of banister included	0	0	6
Fitting a pedestal to a straight seat - -	0	0	1
Working ditto with a plain hollow - -	0	0	2
If with a hollow and quarter round - -	0	0	2½
Fitting a pedestal to a hollow seat - -	0	0	2
Working ditto with a plain hollow - -	0	0	2½
If with a hollow and quarter round - -	0	0	3½
Slip on back rail - - - - -	0	0	1
Veneering ditto - - - - -	0	0	0½
Rounding back part - - - - -	0	0	0
Champhering ditto, each chair - - -	0	0	3
Round upper ends to back feet, each chair	0	0	1
Banister round in front - - - - -	0	0	1
Beading back part outside, either with straight joint top, or vase ditto, each chair -	0	0	2½
Beading inside of ditto, each chair - -	0	0	2
Beading outside of banisters, one plain sweep, each banister - - - - -	0	0	0½
Moulding back part with vase top, with book-edge moulding, each chair - -	0	1	2
Ditto with sand-ground moulding - -	0	1	4
Ditto with toad-back moulding - -	0	1	5
Tapering feet, each side - - - - -	0	0	0½
For other extras—See tables, and make any out-seat chair, with wide top.			



# A MAHOGANY LOOSE-SEAT, BANISTER-BACK CHAIR.

FOR framing and sweeping a mahogany loose-seat, banister-back chair, straight joint in top; top and back feet, straight in front; double pitch or round lower ends, straight-seat rails; plain banister and pedestal; plain Marlbro' feet, with blocks in front corners, without lower rails - - - - £.0 3 1

## EXTRAS.

For a hollow-seat, lower joint of banister included, pedestal and back rail framed together - - - -	0	1	2
Fitting a pedestal to the hollow of back rail, extra from a pedestal framed with the back rail - - - -	0	0	3
Working a plain hollow on a straight pedestal - - - -	0	0	2
If with a hollow, and quarter round - - - -	0	0	2½
Working a plain hollow on a hollow seat pedestal - - - -	0	0	2½
If with hollow and a quarter round - - - -	0	0	3½
Veneering back rails, each - - - -	0	0	0½
For other extras—See tables, and mahogany nail-seat, banister-back chair, and mahogany nail-seat chair, with wide top.			

# A MAHOGANY HOLLOW-SEAT, BANISTER-BACK, WOOD-BOTTOMED CHAIR.

FOR framing and sweeping a mahogany hollow-seat, wood-bottomed, banister-back chair, straight joint in top; top, and back feet straight in front; double pitch, or round lower ends; straight seat rails; plain banister; plain Marlbro' feet, with lower rails, lower joint of banister included - - - £0. 3 5

## EXTRAS.

Blocking on bottoms, each chair	-	-	0	0	4
Round upper ends to back feet, each chair			0	0	1
Tapering feet, each side	-	-	-	0	0 0½
For a slip on back rail	-	-	-	0	0 1
Veneering ditto	-	-	-	0	0 0½

For other extras—*See tables, and nail-seat, banister-back chair, or nail-seat chair, with wide top.*

# A MAHOGANY NAIL-SEAT, VASE-BACK CHAIR.

FOR framing and sweeping a mahogany vase back, nail-seat chair, with plain banister; top, stay rail, and back feet, straight in front; double pitch, or round lower ends of back feet; straight seat rails; plain Marlbro' feet; straight braces, without lower rails £0. 4 2

## EXTRAS.

For lower rails, single shouldered, each chair	0	0	8
------------------------------------------------	---	---	---

	<i>£.</i>	<i>s.</i>	<i>d.</i>
For double shouldered lower rails, each chair	0	0	10
Rounding ditto, each chair	0	0	2
Plain sweep-feat rails, each rail	0	0	1½
Hollow feat	0	0	4
Commode front rail	0	0	2
Rabbiting a straight-back rail	0	0	0½
Rabbiting a hollow ditto	0	0	1
A slip to ditto	0	0	1
Veneering back rail	0	0	0½
Round upper ends to back feet, each chair	0	0	1
Banister round in front	0	0	1
Top, hollow in front, not exceeding one inch	0	0	2
Stay-rail, the same hollow in front	0	0	2
If block to stay rail, to receive the splats	0	0	3
Sinking block and glueing on patra	0	0	3
Rounding back part without block	0	0	9
Rounding ditto, with a block to stay-rail	0	0	10
Beading back part, inside and outside	0	0	6
Relieving and beading the front of back feet under the stay-rail, each chair	0	0	2
Moulding back part with book-edge moulding	0	1	4
Moulding ditto with land-ground moulding	0	1	6
If with toad-back ditto	0	1	8
Reeding back part, each reed	0	0	6
Each mitre to each reed	0	0	0½
Moulding the front of back feet under the stay rail, with book-edge, or land-ground moulding, each chair	0	0	4
If with toad-back moulding, each chair	0	0	6
Reeding ditto, each reed	0	0	1½
If made with splats, deduct for banister	0	0	8
Framing splats, not exceeding an inch and a half at top	0	0	2



	£.	s.	d.
Framing splats in stay-rail, without a block, charge the same for the joint as in the top.			
Framing three splats to form a gothic back, each chair - - - - -	0	0	9
Cutting and shaping splats, to form with the back, each splat plain sweep, with a square at bottom - - - - -	0	0	0
For each scrawl to ditto - - - - -	0	0	0½
Cutting and shaping three splats to form a gothic at top, each chair - - -	0	0	9
Bevilling the fronts of ditto to shew a raise in the middle, each chair - - - -	0	0	6
Beading ditto, each chair - - - -	0	0	6
Moulding ditto, with book-edge, or sand-ground moulding, each chair - - -	0	1	0
Reeding ditto, each chair - - - -	0	2	0
Moulding splats to form with the back, plain sweep, a square at bottom, with book-edge or sand-ground moulding, each splat - - - - -	0	0	3
Reeding ditto, each reed - - - -	0	0	1½
For other extras—See tables.			

#### A MAHOGANY HOLLOW-SEAT, WOOD-BOTTOMED, VASE-BACK CHAIR.

FRAMING and sweeping a mahogany hollow-seat, wood-bottomed, vase-back chair; plain banister; top, stay-rail, and back feet, straight in front; double pitch, or

round lower ends to back feet; with two rails on a side; plain Marlbro' feet - - - £.0. 5 4

### EXTRAS.

For blocking on bottoms, each chair	-	0	0	4
Each extra rail, single shouldered	-	0	0	2
If ditto are double shouldered, each	-	0	0	2½
Top, hollow in front, not exceeding one inch in hollow	-	0	0	2
Stay-rail, the same hollow in front	-	0	0	2
Veneering back rails, each	-	0	0	0½
Slip to ditto	-	0	0	1
For other extras—See nail-feat, vase-back chair and tables.				

## A MAHOGANY LOOSE-SEAT, VASE-BACK CHAIR.

FOR framing and sweeping a mahogany loose-seat, vase-back chair, with plain banister; top, stay-rail, and back feet, straight in front; double pitch, or round lower ends to back feet; straight seat rails; plain Marlbro' feet, with blocks on front corners, without lower rails

£.0. 5 0

### EXTRAS.

For lower rails, single shouldered, each chair	0	0	8
If ditto are double shouldered, each chair	0	0	10
Sweep seat rails, one plain sweep, each rail	0	0	6
Commode front rail	0	0	8
Hollow seat, with straight seat rails	0	1	0

	£.	s.	d.
Hollow seat, with straight sides, and plain sweep front rail - - - -	0	1	9
Veneering back rails, each veneer - -	0	0	0 $\frac{1}{2}$
Slip - - - - -	0	0	1
Top, hollow in front, not exceeding one inch in hollow - - - - -	0	0	2
Stay rail, the same hollow in front - -	0	0	2
For other extras—See <i>nail-seat, vase-back chair and tables.</i>			

#### AN ELM MATTED-SEAT, SMOAKING CHAIR.

FOR framing and sweeping a matted-seat, banister-back, smoaking chair, elm, ash, &c. round top, scrowl elbows, plain banisters and pedestals, straight seat rails, plain Marlbro' feet, plain slips, with lower rails

£. 0 4 6

For extras—See *elm nail-seat, smoaking chair.*

#### AN ELM NAIL-SEAT, SMOAKING CHAIR.

FOR framing and sweeping a nail-seat, banister-back, smoaking chair, elm, ash, beech, or walnut-tree; round top, scrowl elbows, plain banisters and pedestals, straight seat rails, plain Marlbro' feet, straight braces, without lower rails, or cross stretcher . . . . .

0 5 0



## EXTRAS.

For framing a back board into the top	0	0	9
Sweeping to be paid for according to the work that is in it.			
Cutting holes in banisters, each hole	-	-	0 0 1
Working pedestal with a hollow	-	-	0 0 2
If with hollow and a quarter round	-	-	0 0 2½
If with lower rails, each chair	-	-	0 0 6
If with cross stretcher	-	-	0 0 8
For a loose seat	-	-	0 0 10
Working an oval on the frame of ditto	-	-	0 0 2
Tapering of feet, each side	-	-	0 0 0½
For other extras—See tables.			

## A MAHOGANY NAIL-SEAT, SMOAKING CHAIR.

FOR framing and sweeping a mahogany nail-seat, banister-back, smoking chair, round top, with scrowl elbows, plain banisters and pedestals, straight seat rails, plain Marlbro' feet, straight braces, without lower rails, or cross stretcher - - - - £.0 6 0

## EXTRAS.

For framing a back-board into the top	-	0	1	0
Sweeping a ditto, to be paid for according to the work that is in it.				
Cutting holes in banisters, each hole	-	0	0	1
Working pedestal, with plain hollow	-	0	0	2½
Working ditto with hollow and a quarter round	-	0	0	3
Lower rails, each chair	-	-	0	0 8
Cross stretcher	-	-	0	0 10

	£.	s.	d.
A loose seat - - - - -	0	0	10
Working an ovalo on the frame - -	0	0	2½
Tapering feet, each side - - -	0	0	0½

### A BEECH-HALL CHAIR, FOR JAPANNING.

FRAMING a hall chair, flat seat, straight-seat rails, edge of bottom square, plain square back, straight in front, spliced on the outside of back rail, with round lower ends to back feet, and turned front feet

£. 0 3 3

#### EXTRAS.

Shaping the back, with hollow corner top, straight sides, with a hollow at bottom	0	0	6
Cutting an arch hole at bottom of ditto -	0	0	3
Astragal let in across the back, and returned on the edge of ditto - - -	0	0	3
If raised out of the solid - - - -	0	0	9
Shaping the outside of vase, or oval back -	0	0	6
Cutting and shaping, or relieving, the lower part of back, to form a vase, or oval, each - - - - -	0	0	6
Sweep seat rails, each rail - - - -	0	0	1½
Commode front rail - - - - -	0	0	2
Bell or elliptic seat - - - - -	0	1	0
Dowelling rails, each <i>Dowell</i> - - -	0	0	0½
Sweeping lower ends of back feet, with a toe, if left square, each chair - -	0	0	4
Rounding and sweeping ditto, each chair -	0	0	6
Rounding back feet, with plain sweep, each chair - - - - -	0	0	4

	£.	s.	d.
For sweeping the edge of the sweep sides and front, bell, or elliptic seats, each seat	0	0	2
For other extras—See mahogany hall-chair and tables.			

### A MAHOGANY HALL-CHAIR.

FRAMING a mahogany hall-chair, flat seat, straight seat rails, edge of bottom square, plain square back, straight in front, spliced on the outside of back rail, with round lower ends of back feet, and turned front feet	£.	s.	d.
	0	3	9

#### EXTRAS.

Shaping the back, with hollow corner top, straight sides, with a hollow at bottom	0	0	8
Cutting an arch hole at bottom of ditto	0	0	4
Astragal let in across the back, and returned on the edge of ditto	0	0	4
If raised out of the solid	0	1	0
Shaping the outsides of vase or oval back	0	0	8
Cutting and shaping, or relieving the lower part of back to form a vase, or oval, each	0	0	8
Extra work in backs, to be paid for according to the work that is in them.			
Sweep seat rails, each rail, plain sweep	0	0	1½
Commode front	0	0	2
Bell, or elliptic seat	0	1	0
Dowelling rails, each dowell	0	0	0½



	£.	s.	d.
Sweeping lower ends of back feet with a toe, if left square behind, each chair -	0	0	4
Rounding and sweeping ditto, each chair	0	0	6
Rounding back feet, plain sweep, each chair	0	0	4
Sweeping the edge of sweep sides and front, bell, or elliptic seats, each seat -	0	0	2
Sweeping and rounding ditto - - -	0	0	3
Working a quarter round, or ovalo, on ditto	0	0	6
Other extras in seats, to be paid for.			
Veneering straight seat rails, each chair -	0	0	3
Ditto sweep rails, one plain sweep, each chair	0	0	6
Ditto bell, or elliptic seat, each chair - -	0	0	9
For other extras—See tables.			

#### A BERGER CHAIR.

FOR framing and sweeping a stuffed-over, berger chair;  
straight front rail, flump and front feet in one; plain  
Marlbro' front feet - - - £.0 12 0

#### EXTRAS.

For a sweep front rail - - -	0	0	2
Rounding mahogany flumps and elbows, or beech ditto, for japanning, each chair	0	1	0
Rabbiting ditto, inside and outside, and return- ing it on the top of the elbows, each ditto - - -	0	0	10
Moulding flumps and elbows, with book-edge moulding - - -	0	1	3
Sand-ground ditto - - -	0	1	5

	£.	s.	d.
Moulding stumps and elbows, with toad-back moulding - - - - -	0	1	8
Splicing the elbows to shew mahogany in front, each chair - - - - -	0	0	6
If the back is caned, or stuffed, in a rabbit, each chair, extra from a back stuffed over - - - - -	0	1	0
Rabbiting the inside of back, top, stay-rails, elbows, and stumps - - - - -	0	1	6
Outside of ditto - - - - -	0	1	0
Rabbiting inside of back, without stay-rails, each chair - - - - -	0	1	3
Rounding back with stay-rails, each chair	0	2	6
Rounding ditto without stay rails - - -	0	1	6
If made without stay-rails, deduct for ditto, each chair - - - - -	0	1	0

### MAHOGANY CABRIOLE CHAIR.

FRAMING and sweeping a mahogany stuffed-over, cabriole  
chair, vase or oval back, plain Marlbro' feet

£. 0 5 6

#### EXTRAS.

Champhering back part - - - - -	0	0	8
Rounding ditto - - - - -	0	0	10
Framing a banister in vase or oval backs, not exceeding seven inches in joint -	0	1	3
All banisters, exceeding seven inches in joint, each inch extra - - - - -	0	0	1
Hollowing banisters out of the solid, each	0	0	6

	£.	s.	d.
Framing a banister in a top, with a circular joint, a square on each side, extra from a common vase - - - -	0	0	6
Sweeping ditto, extra - - - -	0	0	3
Rounding ditto - - - -	0	1	0
Framing a banister in a top, with three distinct sweeps, extra from a common vase	0	0	9
Extra for sweeping this chair - - - -	0	0	4
Champhering - - - -	0	0	8
Rounding ditto - - - -	0	1	0
Framing splats in vase or oval backs, not exceeding one inch in joint - -	0	0	3
If more than one inch in joint, not exceeding one inch and a half, each splat -	0	0	4
And so on in proportion to every half inch in width.			
Oval or round seat, extra - - - -	0	0	8
Dowelling-in all chairs, each dowell - -	0	0	0½
Rabbling inside of back for stuffing, each chair - - - -	0	0	10

### A MAHOGANY NIGHT-CHAIR.

FOR framing and sweeping a mahogany banister-back night-chair, with wide-seat rails; plain banister and pedestal; straight joint in top; top straight in front; double pitch, or round lower ends, and straight upper ends to back feet; plain Marlbro' feet; outside elbows, with round ends, sweeping and rounding ditto included:—or square-back, stay-rail ditto, with straight



top, and stay-rail, straight in front ; back feet, plain taper above the seat, without splats or banisters

£.0 8 0

#### EXTRAS.

For a wide top, dove-tailed on back feet, straight in front - - - - -

0 0 5

For other extras—*See wide-top chairs.*

Veneering back rail - - - - -

0 0 2

Slip to ditto - - - - -

0 0 1

Preparing front and side rails, and veneering ditto, each chair - - - - -

0 1 0

Hollow seat, wood-bottomed, or hollow, stuffed seat - - - - -

0 1 0

For all other extras—*See mahogany chairs and tables.*

If night-chairs are made of the same pattern, elm, ash, beech, or walnuttree, with the same elbows, deduct for each chair from the start price of mahogany ones

0 1 0

#### ELM BANISTER BACK TABLE CHAIR.

FOR framing and sweeping a banister-back table-chair, elm, ash, beech, or walnuttree ; flat seat, two rails of a side ; single pitch, and straight upper ends of back feet ; plain banister and pedestal ; straight joint in top ; plain Marlbro' feet ; outside elbows in the plainest state, to receive a stick - - -

£ 0 3 6

## EXTRAS.

For hollow seat, lower joint of banister included	-	-	-	-	-	0	0	3
Loose seat, extra from a flat seat	-	-	-	-	-	0	0	8
Working a straight pedestal with a hollow, each	-	-	-	-	-	0	0	1½
If with a hollow and a quarter round, each	-	-	-	-	-	0	0	2
Cutting holes in banisters, each hole	-	-	-	-	-	0	0	1
If ditto is cut in the top, each	-	-	-	-	-	0	0	1½
Double pitch, or round lower ends to back feet, each chair	-	-	-	-	-	0	0	2
Round upper ends to ditto, each chair	-	-	-	-	-	0	0	1
Vase top	-	-	-	-	-	0	0	4
Tapering feet, each side	-	-	-	-	-	0	0	0½
Rounding back part	-	-	-	-	-	0	0	4
Beading ditto	-	-	-	-	-	0	0	4
Beading outsides of banisters, plain sweep, each banister	-	-	-	-	-	0	0	1
For other extras—See tables.								

## AN ELM SQUARE-BACK TABLE-CHAIR.

FRAMING a flat-seat, square-back, stay-rail table-chair, elm, ash, beech, or walnut-tree; straight top, and stay-rail; straight in front; single pitch-back feet; straight upper ends; plain taper above the seat, with two rails on a side; plain Marlboro' feet; elbows in the plain-elm plate, to receive a stick, without splats or banister.

£. 0 3 6

	£.	s.	d.
For a wide top, straight in front, dove-tailed on back feet - - - -	0	0	3
Stay-rail, the same hollow in front -	0	0	1
Top, hollow in front - - - -	0	0	2
Round upper ends to back feet, each chair	0	0	1
Cutting up ditto, with a hollow under stay- rail, each chair - - - -	0	0	2
Double pitch, or round lower ends of ditto	0	0	2
Top, one plain sweep - - - -	0	0	3
Top, with one plain sweep, and break at corners - - - -	0	0	4
Hollow cornered top, straight in the middle	0	0	4
Framing straight upright splats, not exceeding one inch in joint, each splat - -	0	0	1½
If splats are more than one inch in joint, not exceeding one inch and a half, each ditto - - - -	0	0	2
And so on in proportion to the width of each splat.			
Splat round in front, each - - - -	0	0	0½
For other extras—See tables.			

#### A MAHOGANY NAIL-SEAT, BANISTER-BACK TABLE-CHAIR

FOR framing and sweeping a mahogany nail-seat, banister-back table-chair, straight joint in top; top, straight in front; double pitch, or round lower ends, and straight upper ends to back feet; plain banister and pedestal; straight-seat rails, with lower rails; plain Marlbro'



feet; straight braces; outside elbows in the plainest  
state, to receive a flick - - - £.0 4 3

## EXTRAS.

For a top, hollow in front, the hollow not ex- ceeding three-quarters of an inch - - -	0 0 2
Vase top - - - - -	0 0 4
Vase top, with round corners - - - - -	0 0 6
Cutting holes in banisters, each hole - - -	0 0 1
If ditto is cut into the top, each hole - - -	0 0 1½
Round upper ends to back feet, each chair - - -	0 0 1
Banister, round in front - - - - -	0 0 1
Sweep-feat rails, one plain sweep, each rail - - -	0 0 1½
Hollow feat, lower joint of banister included - - -	0 0 5
Fitting a pedestal to straight back rail - - -	0 0 1
Working ditto with a plain hollow - - - - -	0 0 1½
If ditto with hollow and a quarter round - - -	0 0 2
Fitting ditto, to a hollow back-rail - - - - -	0 0 2
Working ditto with a plain hollow - - - - -	0 0 2
Ditto with a hollow and a quarter round - - -	0 0 2½
Rabbeting straight-back rails, each rail - - -	0 0 0½
Rabbeting a hollow ditto - - - - -	0 0 1
Veneering back rails, each - - - - -	0 0 0½
Slip to ditto - - - - -	0 0 1
Hollow wood-bottomed, extra from a straight nail feat, lower joint of banister in- cluded - - - - -	0 0 6
Blocking on bottom to ditto, each chair - - -	0 0 3
Straight loose-feat, extra from a straight nail- feat - - - - -	0 0 10
Close-stool feat to ditto - - - - -	0 1 6
Hollow loose-feat, extra from a straight loose- feat - - - - -	0 1 0

## 48

Sweep rail, to a straight loose-seat, plain sweep,

each rail	-	-	-	-	-	0	0	6
Commode front rail	-	-	-	-	-	0	0	9
Rounding the back part of each chair	-	-	-	-	-	0	0	5
Beading outsides of banister, plain sweep	-	-	-	-	-	0	0	0½
Beading back part, outside and inside, each chair	-	-	-	-	-	0	0	4
Moulding ditto with book-edge moulding	-	-	-	-	-	0	1	0
Ditto with sand ground moulding	-	-	-	-	-	0	1	2
Ditto with toad-back moulding	-	-	-	-	-	0	1	3
Foot-board	-	-	-	-	-	0	0	8
Ditto with brass racks	-	-	-	-	-	0	1	0
Mounting chair on stool, with screw-nut and plate	-	-	-	-	-	0	0	4
Tapering feet, each side	-	-	-	-	-	0	0	0½
Therming feet, with a hollow and square, each foot	-	-	-	-	-	0	0	4
Flat seat, wood-bottomed, to be reckoned the same as straight nail-seat, with straight-seat rails	-	-	-	-	-	-	-	-

For other extras—See tables.

### A MAHOGANY NAIL-SEAT, SQUARE-BACK TABLE CHAIR.

FOR framing a mahogany nail-seat, square-back, stay-rail, table-chair; straight top, and stay-rail straight in front; double pitch, or round lower ends, and straight upper ends of back feet; plain taper above the seat; straight-seat rails, with lower rails; plain Marl-

bro' feet; straight braces; elbows in the plainest  
state, to receive a stick, without splats or banister

£. 0 4 3

### EXTRAS.

For a wide top, straight in front, dove-tailed on back feet - - - - -	0 0 4
Top, hollow in front, not exceeding one inch in hollow - - - - -	0 0 2
Stay-rails the same hollow in front - -	0 0 1
Round upper ends to back feet, each chair -	0 0 1
Cutting up ditto, with a hollow under stay rail, each chair - - - - -	0 0 2
Top, one plain sweep - - - - -	0 0 3
Top, one plain sweep, and break at corners	0 0 4
Hollow cornered top, straight in the middle	0 0 4
For framing straight upright splats, or turned pillars, not exceeding one inch in joint, each - - - - -	0 0 1½
If splats are more than one inch in joint, not exceeding an inch and a half, each ditto, single shouldered - -	0 0 2
If ditto are double shouldered, each shoulder, extra from a single one - - -	0 0 0½
And so on in proportion to the width of each splat.	
Ditto, round in front, each splat - -	0 0 0½
Cutting holes in splats, each hole - -	0 0 1
Outside of splats to be paid for according to the work that is in them.	
Rounding back part with straight top, each chair - - - - -	0 0 5



	£.	s.	d.
Rounding ditto, with hollow corner top, or top with one plain sweep, and break at corners - - - - -	0	0	7
Beading back part with straight top, or top with one plain sweep - - - - -	0	0	4
Beading ditto with hollow-cornered top, or top with one plain sweep, and break at corners - - - - -	0	0	5
Moulding back part, with straight top, with book-edge moulding - - - - -	0	1	0
Ditto with sand-ground moulding - - - - -	0	1	2
Ditto with toad-back ditto - - - - -	0	1	4
Working a book-edge moulding on ditto with hollow-cornered top; or top with one plain sweep, and break at corners - - - - -	0	1	2
With sand-ground moulding - - - - -	0	1	4
With toad-back ditto - - - - -	0	1	6
Reeding back feet to a wide-top chair, flat in front, without stops, at per dozen - - - - -	0	0	6
If ditto are stopped, each stop to each <del>mitre</del> <i>mitre</i> - - - - -	0	0	0 1
Moulding stay-rails with book-edge, flat-ground, or sand-ground moulding, each - - - - -	0	0	3
Rounding back part, wide top, each chair - - - - -	0	0	4
Framing two straight splats, lapped together to form a cross, hollow in front - - - - -	0	0	10
Moulding ditto with flat-ground moulding - - - - -	0	0	8
Framing four ogee splats, to form a gothic, and diamond in the middle, to a top, hollow in front - - - - -	0	2	3
Reeding ditto, each reed - - - - -	0	0	1 1/2
Beading ditto, each chair, mitres included - - - - -	0	0	6

	£.	s.	d.
Beading two splats to form a cross, mitres included - - - - -	0	0	0
Moulding ditto, mitres included - - - - -	0	0	8
Reeding straight, upright splats, without stops, at per dozen reeds - - - - -	0	0	4
If ditto are stopped, each stop, to each reed, extra - - - - -	0	0	0½
Reeding taper splats, without stops, at per dozen reeds - - - - -	0	0	9
Each stop to each reed - - - - -	0	0	0½
Reeding pillars, at per dozen reeds - - - - -	0	0	9
Moulding straight, upright splats with book-edge, flat-ground, or sand-ground moulding, without stops, each splat - - - - -	0	0	1½
If ditto are stopped, each stop - - - - -	0	0	0½
Moulding straight, cross splat, hollow in front, each splat, without stops - - - - -	0	0	2
Reeding ditto, at per dozen reeds, without stops - - - - -	0	0	6
Each stop to each reed, extra - - - - -	0	0	0½
For other extras—See <i>nail-seat, banister-back, table-chair, and tables.</i>			

### A MAHOGANY NAIL-SEAT, VASE-BACK TABLE CHAIR.

FOR framing and sweeping a mahogany nail-seat, vase-back, table-chair; top and flay rail straight in front; double pitch, or round lower ends, and straight upper ends to back feet; plain banister; straight-seat rails;

with lower rails; plain Marlbro' feet; straight  
braces; outside elbows in the plainest state, to receive  
a flick - - - - - £.0 5 8

#### EXTRAS.

Top, hollow in front	- - - - -	0 0 2
Stay rail, hollow in front	- - - - -	0 0 2
Rounding back part, without a block in stay- rail, each chair	- - - - -	0 0 9
Rounding back part, with a block in ditto, each chair	- - - - -	0 1 0
For other extras—See <i>mahogany nail-seat,</i> <i>banister-back table-chair, and mahogany</i> <i>vase-back, nail-seat chair, and tables.</i>		

#### A MAHOGANY BERGER TABLE-CHAIR.

FRAMING and sweeping a stuffed-over, berger table-chair,  
in the plainest state, with cross stretcher, turned stump,  
stump and front feet in one, straight-front rail, plain  
Marlbro' feet £.0 11 0

#### EXTRAS.

For a sweep front rail	- - - - -	0 0 2
If the back is stuffed, or caned, in a rabbit, each chair	- - - - -	0 0 6
Rabbeting inside of back with stay-rails	-	0 1 0
Rounding ditto behind	- - - - -	0 2 6
If with cane back and seat, without stay-rails, deduct for stay-rails, each chair	-	0 1 0



	£	s.	d.
Rounding back part, without flay-rails -	0	1	6
Rabbeting ditto - - - - -	0	0	9
Foot-board and mounting - - - - -	0	1	0
Ditto with brass racks - - - - -	0	1	3

### A SQUARE STOOL TO BERGER CHAIR,

WITH the bottom let in with a rabbit, without lower rails, or  
cross stretcher; plain Marlboro' feet £.0 2 8

#### EXTRAS.

Lower rails - - - - -	0	0	6
Cross stretcher - - - - -	0	0	8
Working the oval round the frame - -	0	0	2
Leaving the edge of the rail up, to form a cock- bead, each stool - - - - -	0	0	2
Plain French feet, each foot - - - -	0	0	3

### AN ELM-STOOL FOR A TABLE-CHAIR.

FOR framing a square stool for a table-chair, elm, ash, beech,  
or walnut-tree; straight-seat rails, plain Marlboro' feet,  
without drawer, cross stretcher, or lower rails 2s. 0

#### EXTRAS.

For working the edge of the bottom, with a quarter round, or oval - - - - -	0	0	2
If the bottom is let in with a rabbit - -	0	0	4
For working an oval round the frame -	0	0	2

	<i>£.</i>	<i>s.</i>	<i>d.</i>
For leaving the edge of the rails up, to form a cock-head, each stool . . . . .	0	0	2
If a piece is dove-tailed, or framed across, to support their bottom . . . . .	0	0	2
A drawer to ditto, scratch-beaded . . . . .	0	1	3
For lower rails . . . . .	0	0	4
For cross stretchers . . . . .	0	0	6
Tapering the feet, each side . . . . .	0	0	0½
If these stools, or chairs, are made of cherry- tree, extra to each shilling . . . . .	0	0	1½
For other extras— <i>See mahogany stool for table- chair.</i>			

### A MAHOGANY STOOL FOR A TABLE- CHAIR.

FOR framing a mahogany square stool for a table-chair;  
straight seat-rails; plain Marlbro' feet, without a  
drawer, cross stretcher, or lower rails    *£* 0 2 0

#### EXTRAS.

If these stools are framed upon the bevil . . . . .	0	0	2
For working the edge of the bottom with a quarter round, or ovalo . . . . .	0	0	2
If the bottom is let in with a rabbit . . . . .	0	0	4
For working an ovalo round the frame . . . . .	0	0	2
For leaving the edge of the rail up, to form a cock-head, each stool . . . . .	0	0	2
If a piece is dove tailed, or framed across, to support the bottom . . . . .	0	0	2

	£.	s.	d.
For a drawer to the stool, scratch-headed	0	1	6
If drawer-front, or rails, are veneered, each			
veneer	0	0	2
For lower rails	0	0	6
For cross stretcher	0	0	8
Tapering feet, each side	0	0	0 $\frac{1}{2}$
Cock-beading the drawer	0	0	3

---

### FOOT-STOOLS.

FOR a square foot-stool, with turned or tapered feet, framed  
with a tenon, or put in with a turned pin £. 0 1 0

#### EXTRAS.

Veneering round the frame to shew a rabbit,			
each stool	0	0	2
Mitring quarter-stuff round ditto, for moulding	0	0	4
Moulding ditto with hook-edge, flat-ground,			
or sand-ground mouldings, each stool	0	0	3
Putting cock-bead round bottom edge of ditto	0	0	4

---

### FOR AN OVAL, OR OCTAGON FOOT-STOOL

£. 0 1 4

#### EXTRAS.

Veneering ditto to shew a rabbit	0	0	4
Mitring quarter-stuff round an octagon ditto	0	0	5
Moulding ditto	0	0	3
Putting a cock-bead round the bottom edge of			
oval or octagon ditto	0	0	6



	<i>£.</i>	<i>s.</i>	<i>d.</i>
If only one of these stools at one time, charge			
extra - - - - -	0	0	2

### A MAHOGANY NIGHT-STOOL.

FRAMING a mahogany night-stool, with wide rails, loose seat, or top hinged to the back rail, plain Marlbro' feet, edge of top worked with an oval *£.* 0 4 6

#### EXTRAS.

Clamping the top square - - -	0	0	6
Mitre-clamping ditto, each mitre - -	0	0	6
Mitring stuff round the top for a moulding	0	0	6
Working ditto with stone-moulding -	0	0	4
Veneering top - - - - -	0	0	6
Preparing and veneering seat-rails, each rail	0	0	4
Tapering feet, each side - - -	0	0	0½
If made with elm, ash, &c. deduct from the flat price - - - - -	0	0	6

### A NAIL-SEAT STOOL.

FRAMING a square nail-seat stool; straight-seat rails; twenty inches in front, or under; plain Marlbro' feet; straight braces, without lower rails *£.* 0 1 6

#### EXTRAS.

For every inch more than twenty inches in front - - - - - 0 0 1.

					£.	s.	d.
For a hollow seat	-	-	-	-	0	0	4
For lower rails	-	-	-	-	0	0	6
Tapering feet, each side	-	-	-	-	0	0	0½
Sweep-seat rails, each rail	-	-	-	-	0	0	1½
If only one of these at one time, charge extra					0	0	2

### A SHOP OR COMPTING-HOUSE STOOL.

FRAMING a nail-seat, or wood-bottomed, shop or computing-house stool; straight-seat rails; plain Marlbro' feet; twenty inches in front, or under, with lower rails

£. 0 0 0

#### EXTRAS.

For a hollow, nail-seat	-	-	-	0	0	4
For a hollow-seat, wood-bottomed	-	-	-	0	0	6
If higher behind than in front	-	-	-	0	0	4
Tapering feet, each side	-	-	-	0	0	0½
If only one of these at one time, charge extra				0	0	2
For an oval top to a straight seat	-	-	-	0	0	2
For a hole in ditto	-	-	-	0	0	1½
Mahogany or elm, to be reckoned the same.						

### FOR A CAMP-STOOL,

IN the plainest state	-	-	-	-	£. 0 2 0
-----------------------	---	---	---	---	----------

## A SCROWL-HEAD WINDOW-STOOL.

FRAMING and sweeping a mahogany stuffed-over, scrowl-head window-stool, two feet in the frame, or under; straight-seat rails; scrowls and feet in one piece; plain Marlbro' feet - - - £.0 4 6

## EXTRAS.

<del>more</del> more than two feet <i>each Inch</i>	0	0	1
If feet and scrowls are spliced, each splice -	0	0	2
Sweep front rail - - - - -	0	0	2
Cross-stretcher to seat - - - - -	0	0	2
Extra feet to ditto, each foot - - - - -	0	0	4
For a hollow seat - - - - -	0	0	6
For rounding the front of scrowls from the seat, each scrowl - - - - -	0	0	4
Moulding ditto with a patra on top, each	0	0	8
If the moulding continue round the scrowl, each - - - - -	0	1	0
Rabbling ditto to receive the stuffing, each scrowl - - - - -	0	0	3
Therming front feet, each foot - - - - -	0	0	4
Tapering feet, each side - - - - -	0	0	0½
Moulding front feet with book-edge, or sand-ground moulding, without stops, each side - - - - -	0	0	1½
If with stops, each stop - - - - -	0	0	0½
With toad-back moulding, each side - - - - -	0	0	2
If with stops, each stop extra - - - - -	0	0	1
Lower rails - - - - -	0	0	6
Extra rails to ditto - - - - -	0	0	2



## EASY CHAIRS.

FRAMING a straight-cheek, easy chair, straight front rail,  
 plain Marlbro' feet without lower rails £.0 7 6  
 For a faddle-tree cheek, ditto - - - 0 9 0

## EXTRAS.

Sweep front rail	- - - - -	0 0 3
Clofe-stool seat	- - - - -	0 3 6
Lower rails, single shouldered, each chair	-	0 0 9
If ditto are double-shouldered, each chair	-	0 1 0
Putting on castors, and other extras—See <i>sofa</i> .		
Bedstead, with three folds, splined-bottom, with a swinging rail to support ditto		0 0 6
If the back part is made to fall back with racks, and hinged to the back feet, the wings fast to the back, and work in the el- bows	- - - - -	0 3 6
A foot-board, hinged to the front rail, to raise with one rack	- - - - -	0 1 9
Each extra rack	- - - - -	0 0 6
Square clamping ditto	- - - - -	0 0 4

## TUB EASY CHAIR.

FRAMING a tub easy-chair, in the plainest state £.0 14 0

## EXTRAS.

If with a hoop-flump	- - - - -	0 1 0
For a clofe-stool seat to ditto	- - - - -	0 3 0

Sawing to be paid for.  
Tapering, castors, &c. as in sofas.

### A BED CHAIR.

FRAMING a bed-chair, with the back straight, cross rails  
turned - - - - - £.0 5 6

#### EXTRAS.

For hollow back - - - - - 0 0 8  
For elbows - - - - - 0 1 0  
If only one at one time, charge extra - 0 0 4

### GOUTY CRADLE.

FOR making a gouty cradle; straight seat, framed in two  
parts, hung with hinges - - - £.0 7 6  
If framed in three parts - - - 0 9 6

#### EXTRAS.

If with knuckle joints, each joint - - 0 0 10  
For a hollow seat to ditto - - - 0 1 0  
If only one of these at one time, extra - 0 0 6

## A SQUARE SOFA.

**FRAMING** a square sofa, from five feet to six feet long; back and ends all of a height; straight top and ends fast; straight front rail, with two cross stretchers; straight braces, four feet in front; plain Marlbro' feet, without lower rails - - - - £.0 12 0

## EXTRAS.

Pitch-back feet, or round lower ends, each	0	0	1
Every inch more than six feet - -	0	0	1
Every inch less than five feet, deduct -	0	0	1
If the back and ends are of a height, and the front feet in two pieces, extra -	0	0	6
A hollow slump, if the slump and front feet are in one piece - - - -	0	0	9
A hollow slump, framed on front feet -	0	1	0
Hollow elbows - - - -	0	0	6
A top with one plain sweep - - -	0	0	6
A hollow corner, or elliptic top - -	0	0	9
A sweep front rail, one plain sweep -	0	0	6
An elliptic ditto - - - -	0	0	9
A hollow end ditto - - - -	0	1	0
Back to take off - - - -	0	1	0
Ends to take off - - - -	0	2	0
Putting on socket castors, each castor -	0	0	1½
Plate ditto, each - - - -	0	0	0½
Lower rails, each rail - - - -	0	0	3
The stretcher to be reckoned for as many rails as in back part.			
If less than four feet in the front, deduct for each - - - -	0	0	4



	£.	s.	d.
Tapering feet, each side	0	0	0½

### A SQUARE SOFA, WITH SCROWL ENDS.

FRAMING a square sofa, from five feet to six feet long, with scrowl end; one plain sweep in the top; back and ends fast; straight-front rail, four feet in front, two cross stretchers; straight braces; plain Marlboro' feet, without lower rails

£. 0 14 0

#### EXTRAS.

Every inch more than six feet in length	-	0	0	1
Every inch less than five feet, deduct	-	0	0	1
If less than four feet in front, deduct for each foot	- - - - -	0	0	4
Sweep front rail, plain sweep	- - -	0	0	6
Lower rails, each rail	- - -	0	0	3
The stretcher to be reckoned for as many rails as in back part.				
Back to take off	- - - - -	0	1	0
Ends to take off	- - - - -	0	2	0
Socket castors, each	- - - - -	0	0	1½
Plate ditto, each	- - - - -	0	0	0½
Tapering feet, each side	- - - - -	0	0	0½
Each extra cross stretcher to seat	- -	0	0	4
Sawing to be paid for, and other extras as in square sofa.				

## CABRIOLE SOFA.

FRAMING and sweeping a stuffed-over cabriole sofa, in the plainest state, from five feet to six feet long; sweep front; two cross stretchers; plain Marlbro' feet, four feet in front - - - - £.1 2 0

## EXTRAS.

Every inch more than six feet in front	-	0	0	1
Every inch less, deduct	- - - -	0	0	1
Rounding and rabbeting mahogany flump and elbow; flump and front feet in one	- - - -	0	2	0
The flump framed on front feet <del>          </del>		0	2	6
Beading ditto	- - - -	0	0	6
Moulding ditto with a book-edge	- -	0	1	3

## SOFA BEDSTEAD.

SIX feet, four inches long, two feet, four inches wide; straight back and ends, with a folding, splined bottom; folding ends to support the bedstead; small turned pillars, fixed on with plates, and a common pitched tent tester; plain Marlbro', or turned feet

£.1 13 0

## EXTRAS.

Each inch more in length or width	- -	0	0	6
Hollow elbows	- - - -	0	2	0
Hollow-cornered top to the back	- -	0	0	6

	£.	s.	d.
The ends of the bedstead made to accomodate			
French stuffing - - - -	0	1	6
Frame to receive canvas for bedding -	0	2	6
A sweep, elliptic, or bell top, extra from start	0	1	6
A doom top, with four cross laths, and two			
side ones, to continue the sweep hinged			
to the centre, extra from start price -	0	4	0
Each extra lath in doom-top - - -	0	0	6
Sawing out sweep laths, each lath - -	0	0	1

### PORTABLE SOFA BEDSTEAD.

SIX feet four inches long; two feet, four inches wide; square ends and back; the back to fix to the ends, with plates; a folding splined bedstead, fixed to the end with plates; four small turned pillars, fixed on with screws and plates; common tent teller £.1 11 6

#### EXTRAS.

Each extra inch, in length or width - -	0	0	6
A deal or wainscot box, fifteen inches deep;			
six feet, six inches long; two feet, six			
inches wide; bottom rabbited in; flap-			
locked and hinged - - -	0	8	0
Each extra inch, more or less, in length or			
width - - - - -	0	0	3
Ditto in depth - - - - -	0	0	3
Square-clamping the top - - - -	0	0	8
Ditto morticed-clamped - - - -	0	1	4
Mitre clamped, each mitre - - -	0	0	6
Tea-chest top to ditto - - - -	0	2	0



	£.	s.	d.
Each extra lock above one	0	0	4
Each screw, with a nut and plate in top	0	0	2½

---

### A SETTEE.

FRAMING a settee, to be charged the same as so many chairs of the same pattern as the back represents, with one pair of elbows, and the addition of two shillings and sixpence for each chair it represents.

---

### A COUCH.

FRAMING a couch, with one straight head, six feet in length, straight-seat rails, two cross stretchers in the seat, plain Marlbro' feet, without lower rails

	£.	s.	d.
	0	7	6
If with two straight heads	0	9	0

### EXTRAS.

If with scrowl heads, each scrowl	0	0	4
Splicing ditto, each splice	0	0	8
For other extras—See sofas.			

## SQUARE-BACK CABRIOLE CHAIR.

**FRAMING** a mahogany square cabriole-back chair, straight top and stay-rail; hollow seat, wood-bottomed; straight-seat rails; common plain elbows, with turned outside stumps, or turned stumps, and front feet in one; back about two feet high from the seat, without lower rails, splats, or banister £.0 10 6

### EXTRAS.

For lower rails, screwed to back feet, each chair	-	-	-	-	-	0	0	10
Ditto framed into back feet	-	-	-	-	-	0	1	2
Straight loose seat, extra	-	-	-	-	-	0	0	6
Hollow ditto, extra	-	-	-	-	-	0	6	
Framing straight upright splats, not exceeding one inch in joint, each splat	-	-	-	-	-	0	0	2½
Beading back part, each	-	-	-	-	-	0	0	6
Rounding ditto, each	-	-	-	-	-	0	0	9
Moulding to be paid for as in other chairs.								
For other extras—See cabriole chair.								
If made of elm, deduct for each chair	-	-	-	-	-	0	2	6

## ELM STUMPS AND ELBOWS.

**FRAMING**, sweeping, and fitting on outside elbows; stumps with one plain sweep, or turned; the ends of the elbows to project in front, each pair £.0 1 9

	£.	s.	d.
Framing, sweeping, rounding, and fitting on outside elbows, with round ends, to sweep with the stumps, or ends with quirk or two rounds, each pair	-	0	2 3

---

### FRENCH ELBOWS.

FRENCH elbows, straight on the sides, with turned outside stumps, or turned stumps and front feet in one, each pair	-	-	-	0	2	0
Ditto with outside sweep stumps, or sweep stumps and front feet in one, each pair				0	2	0
If with hoop-stump, framed on front feet, each pair	-	-	-	-	0	2 6
Sweeping sides of French elbows, each pair				0	0	9
Elm elbows for children's chair as above-mentioned, deduct for each pair	-			0	0	6
Beading and moulding to be charged for as in mahogany ones.						

---

### MAHOGANY STUMPS AND ELBOWS,

FRAMING, sweeping, rounding, and fitting on outside elbows, with round ends, to sweep with the stumps, or ends, with quirk and two rounds; each pair	£.	0	2	6
------------------------------------------------------------------------------------------------------------------------------------------------------	----	---	---	---



	£.	s.	d.
Beading round end elbows, each pair - -	0	0	6
Moulding ditto with book-edge moulding, each pair - - - - -	0	1	0
Ditto sand-ground moulding, each pair	0	1	2
Ditto with toad-back, each pair - -	0	1	4

### MAHOGANY FRENCH ELBOWS.

FRENCH elbows, straight on the sides, with turned outside  
stumps, or turned stump and front feet in one,  
each pair - - - - - £. 0 2 3

Ditto with outside sweep stumps, or sweep stump and front feet in one, each pair	0	2	7
If with hoop stumps, framed on front feet, each pair - - - - -	0	2	9
Sweeping sides of French elbows, each pair	0	0	0
Mahogany elbows for children's chairs as above-mentioned, deduct for each pair	0	0	6
Beading and moulding to be paid for as in large ones of the same pattern.			
Beading French elbows, with a turned stump, each pair - - - - -	0	0	4
Moulding French elbows, with a turned stump, with book-edge moulding, each pair	0	0	8
Ditto with sand-ground moulding, each pair	0	0	9
Ditto with toad-back moulding, each pair -	0	0	10
Reeding French elbows, straight on the sides, each reed - - - - -	0	0	11
Reeding ditto, swept on the sides, each reed	0	0	11

	<i>£.</i>	<i>s.</i>	<i>d.</i>
Fillets on the sides to be reckoned as one reed.			
Moulding French flumps and elbows, with outside sweep flumps, sweep flump and front feet in one, or hoop flump, with book-edge moulding, each pair -	0	1	3
Moulding ditto with sand-ground moulding, each pair - - - - -	0	1	5
Moulding ditto with toad-back moulding, each pair - - - - -	0	1	7
Reeding ditto, if the flumps are not tapered, each reed - - - - -	0	0	3
If the flumps are tapered, each reed -	0	0	3½
Fillets on the sides to be reckoned as one reed.			
Reeding turned flumps, at per dozen reeds	0	0	9

### FRENCH ELBOWS FOR JAPANNING.

FRAMING French elbows, straight on the sides, with hoop flumps, framed on front feet, each pair	£.	0	2	3
Ditto with outside sweeped flumps, or sweeped flumps and front feet in one, each pair	0	2	0	
Ditto with crane-neck elbows, with outside turned flumps, or straight flumps and front feet in one, sweeped with the end of the elbows, each pair - -	0	2	6	
Sweeping sides of French elbows, each pair	0	0	9	
<i>Extra work in elbows, to be paid for according to the work that is in them.</i>				

**SINKING PANNELS OUT OF THE SOLID,**  
**FOUR inches long or under; about a quarter of an inch**  
**deep, and one inch wide.**

<b>SQUARE</b> end pannel	- - - -	o o 2
Working a small hollow, and one		
square round inner edge of ditto		o o 1
Ditto with two squares	- -	o o 2
<b>ROUND</b> end pannel	- - - -	o o 2 $\frac{1}{2}$
Working a small hollow and one		
square round inner edge of		
ditto	- - - -	o o 1 $\frac{1}{2}$
<b>CANTED</b> corner end pannel	- - - -	o o 2 $\frac{1}{2}$
Working a small hollow and one		
square round the inner edge of		
ditto	- - - -	o o 1 $\frac{1}{2}$
Ditto with two squares	- -	o o 2 $\frac{1}{2}$
<b>OCTAGON</b> end pannel	- - - -	o o 2 $\frac{1}{2}$
Working a small hollow, and one		
square round the inner edge		
of ditto	- - - -	o o 1 $\frac{1}{2}$
Ditto with two squares	- - - -	o o 2 $\frac{1}{2}$
<b>DIAMOND</b> pannel	- - - -	o o 2 $\frac{1}{2}$
Working a small hollow, and one		
square round the inner edge of		
ditto	- - - -	o o 2 $\frac{1}{2}$
Ditto with two squares	- - - -	o o 3 $\frac{1}{2}$
<b>ASTRAGAL</b> end pannel	- - - -	o o 3
Working a small hollow, and one		
square round the inner edge of		
ditto	- - - -	o o 2 $\frac{1}{2}$
Ditto with two squares	- - - -	o o 3 $\frac{1}{2}$



QUARTER round to be charged the same in these pannels as a small hollow and two squares.

HOLLOW cornered pannel	- -	o o	3 $\frac{1}{2}$
Working a small hollow and one square round inner edge of ditto		o o	2 $\frac{1}{2}$
Ditto with two squares	- - -	o o	3 $\frac{1}{2}$
Each extra inch in length	- -	o o	o $\frac{1}{4}$
Each extra half inch in width		o o	o $\frac{1}{4}$

### FORMING PANNELS OUT OF THE SOLID,

Four inches long or under and one inch wide.

SQUARE pannel formed with a small hollow		o o	1
Ditto with one quirk	- - -	o o	2
Ditto with two quirks	- - -	o o	3
ROUND end pannel	- - - -	o o	1 $\frac{1}{2}$
Ditto with hollow and one quirk	- - -	o o	2 $\frac{1}{2}$
Ditto with two quirks	- - -	o o	3 $\frac{1}{2}$
CANTED corner pannel	- - - -	o o	1 $\frac{1}{2}$
Ditto with hollow and one quirk	- - -	o o	2 $\frac{1}{2}$
Ditto with two quirks	- - -	o o	3 $\frac{1}{2}$
OCTAGON pannel	- - - -	o o	1 $\frac{1}{2}$
Ditto with hollow and one quirk	- - -	o o	2 $\frac{1}{2}$
Ditto with two quirks	- - -	o o	3 $\frac{1}{2}$
DIAMOND pannel	- - - -	o o	2
Ditto with hollow and one quirk	- - -	o o	2 $\frac{1}{2}$
Ditto with two quirks	- - -	o o	3 $\frac{1}{2}$
ASTRAGAL pannel	- - - -	o o	2 $\frac{1}{2}$
Ditto with hollow and one quirk	- - -	o o	3 $\frac{1}{2}$

	£.	s.	d.
Ditto with two quirks - - -	0	0	5
Quirk bead to be charged the same as a hollow and two quirks in these pannels.			
Each extra inch in length - -	0	0	0 $\frac{1}{2}$
For each extra half inch in width -	0	0	0 $\frac{1}{2}$

### A CAMP BEDSTEAD,

SIX feet long, and three feet wide; posts turned, upper and lower parts; two rule joints to each post, the sides hinged to fold, with common hipped-top teller

£. 0 16 0

### EXTRAS.

Each inch, more or less, in length or width	0	0	1
For doom, bell, or any other top to ditto— <i>See tent bedstead.</i>			
Colouring and oiling ditto - - -	0	1	0
If polished with hard wax, extra - -	0	0	6
A box to receive the bedstead, flap top, lock and hinge - - -	0	5	0
Square-clamping the top - - -	0	0	6
If mitre-clamped, each mitre - - -	0	0	6
If tea-chest top to ditto - - -	0	1	8

### EXTRAS OMITTED IN FOUR-POST AND TENT BEDSTEAD.

Double bed-boards, extra	-	-	-	0	0	3
Colouring sides and wart	-	-	-	0	0	4
Polishing ditto	-	-	-	0	0	6
If a cross lath in tent bedstead be made sweep,						
each lath extra	-	-	-	0	0	6
Sawing out each ditto	-	-	-	0	0	1
In bureau, press, or wardrobe bedsteads, where they are made separate; the bed- stead to start with stump feet, or swing- ing rail, at						
	-	-	-	0	4	6
For extras in ditto—See <i>wardrobe bedstead</i> .						

### A CRIB.

FRAMING a square crib, three feet, six inches long, twenty inches wide; three boards, either framed or made to slide in grooves

£. 0 6 0

### EXTRAS.

Each extra inch, in length or width	-	-	0	0	1
Ditto in depth of boards, if more than eighteen	-	-	-	-	-
inches	-	-	0	0	2
If a front board, nine inches deep	-	-	0	0	6
Each extra inch in depth of ditto	-	-	0	0	0 1
Making a frame in front, to receive canvas	-	-	0	1	0
Framing ends and back to receive canvas, to be the same price as boards.					



£. s. d.

Putting in canvas, to be paid for according to time.			
Framing ends and back, with four splines in each, to be the same as boards.			
Each extra spline - - - - -	0	0	1½
Making the frames to slide in grooves, either back or ends, each frame - -	0	0	6
Spline bottom to be extra - - - -	0	1	0
Putting on lacking-bottom - - - -	0	0	4
Putting ditto together with bed-screws, each screw - - - - -	0	0	1
Tapering posts, each side - - - -	0	0	0½
If ditto is made of mahogany, extra in the shilling - - - - -	0	0	1½
Colouring and polishing - - - -	0	1	0
All other work, to be paid for according to time.			

## BED-STEPS,

TWO feet wide in front; one foot, eight inches wide, from back to front; one back rail, and two heights of steps

£. 0 4 6

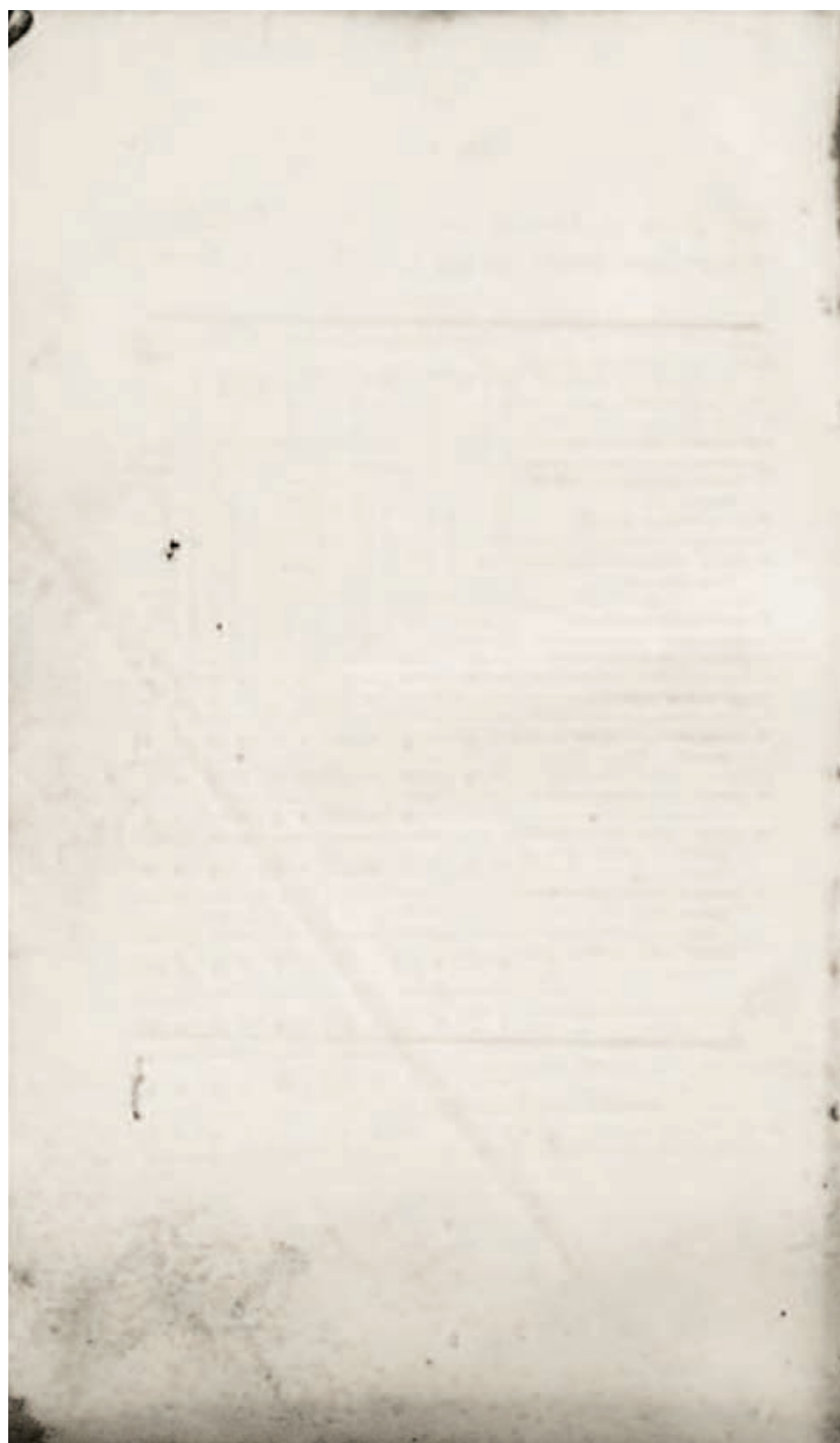
## EXTRAS.

Each inch, more or less, each way - -	0	0	1
Each extra back rail - - - - -	0	0	4
If cross rails in the back, dove-tailed in -	0	1	0
If framed into the legs, extra - - - -	0	0	4
Clamping the steps, and gluing on stuff on the front edge, each - - - - -	0	0	6

		£.	s.	d.
Rounding the edge of the steps, each	-	0	0	2
An astragal or book-edge on ditto	-	0	0	4
Inclosing the upper part, and hinging top or front for a pot cupboard	-	0	3	0
Square-clamping the top or front	-	0	0	4
Mitre-clamping ditto, each mitre	-	0	0	4
Veneering the top or front	-	0	0	4
Each extra height of steps	-	0	1	6
Each extra inch in width of front, when three heights	-	0	0	2
A night-stool to draw between the legs, at the front, the step hinged	-	0	3	6
If made to work upon a trammel, iron extra		0	2	6
If the ends are inclosed to hide the night-stool	-	0	1	6
If inclosed all the way down, when three heights, with flush pannels, extra from the cupboard	-	0	3	0
A plain back	-	0	0	9
If framed back, each pannel extra	-	0	0	6





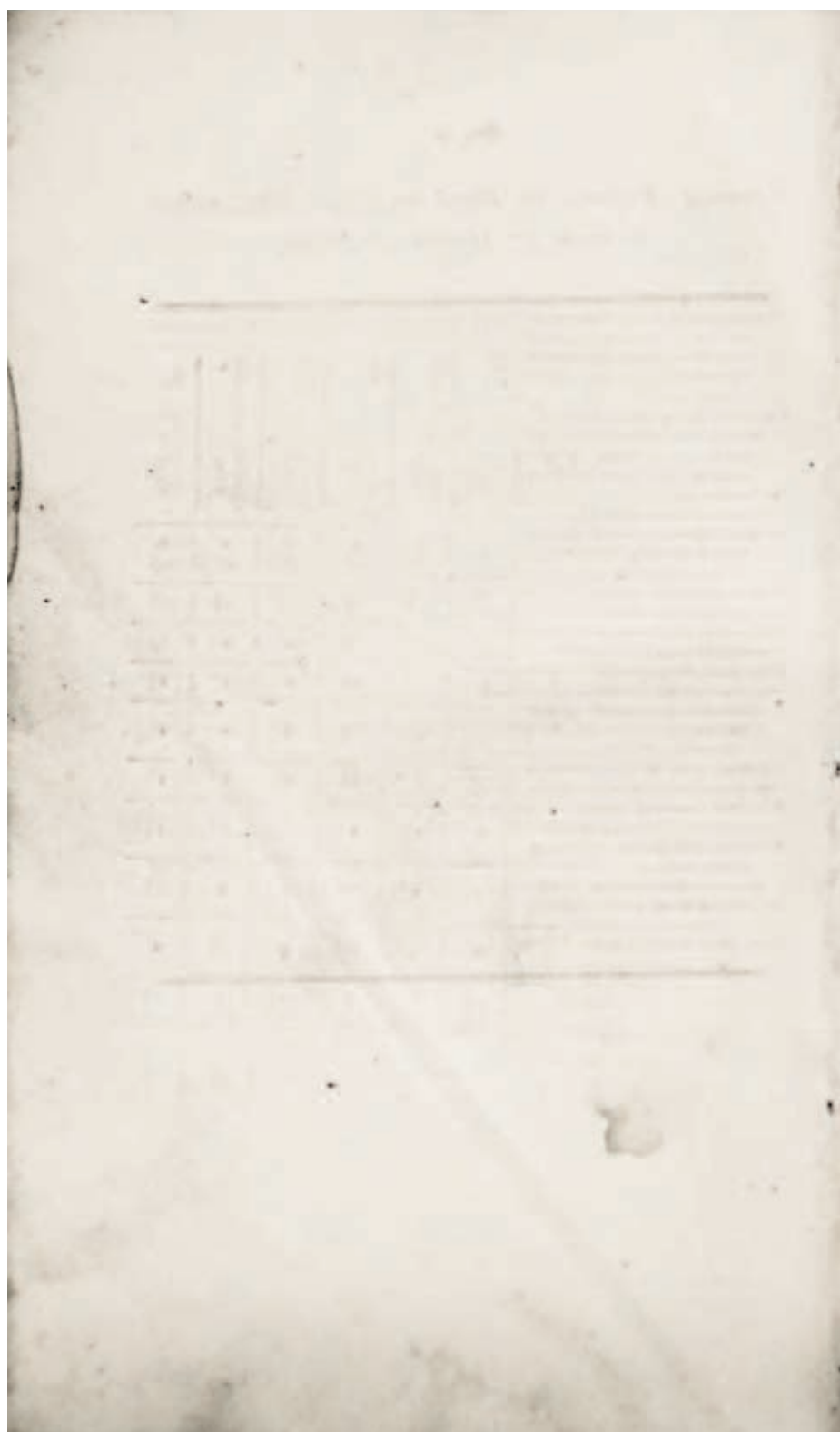


## No. 2.

*The Price of Making and Letting in Pannels in  
Chair-Tops, either Straight or Hollow in Front.*

	On straight tops			On tops hollow in front		
	Making and letting in a pannel with out a string	A single string round ditto	Each extra string	Making and letting in a pannel with out a string	A single string round ditto	Each extra string
Making and letting in an oval pannel, 7d.						
Ditto on hollow top, 9d.						
A single string round ditto, 2d						
Each extra string round ditto, 1d						
Quartering up a diamond pannel, either straight or crossway, 8d.						
Ditto on hollow top, 9d.						
A square pannel, twelve inches long and under	3½	1½	0½	4½	1½	0½
A pannel with round ends	4	1½	½	5½	1½	0½
A pannel with hollow ends	4½	1½	0½	6	2	0½
Ditto with astragal ends	7	2	1½	9	2½	1½
A diamond or canted corner pannel	4½	1½	0½	6	2	1
A pannel with hollow corners	5½	2	1½	7½	2½	1½
A hollow diamond or octagon pannel	6	1½	1	7½	2½	1½
A pannel with hollow or round gothic ends	5	2	1½	7	2	1½
A pannel with internal break corners	7	3	2	9	3½	2
Every three inches longer	0½	0½	1	0½	1	1½

Each half inch, above one inch and a quarter wide, in a pannel, ½d.

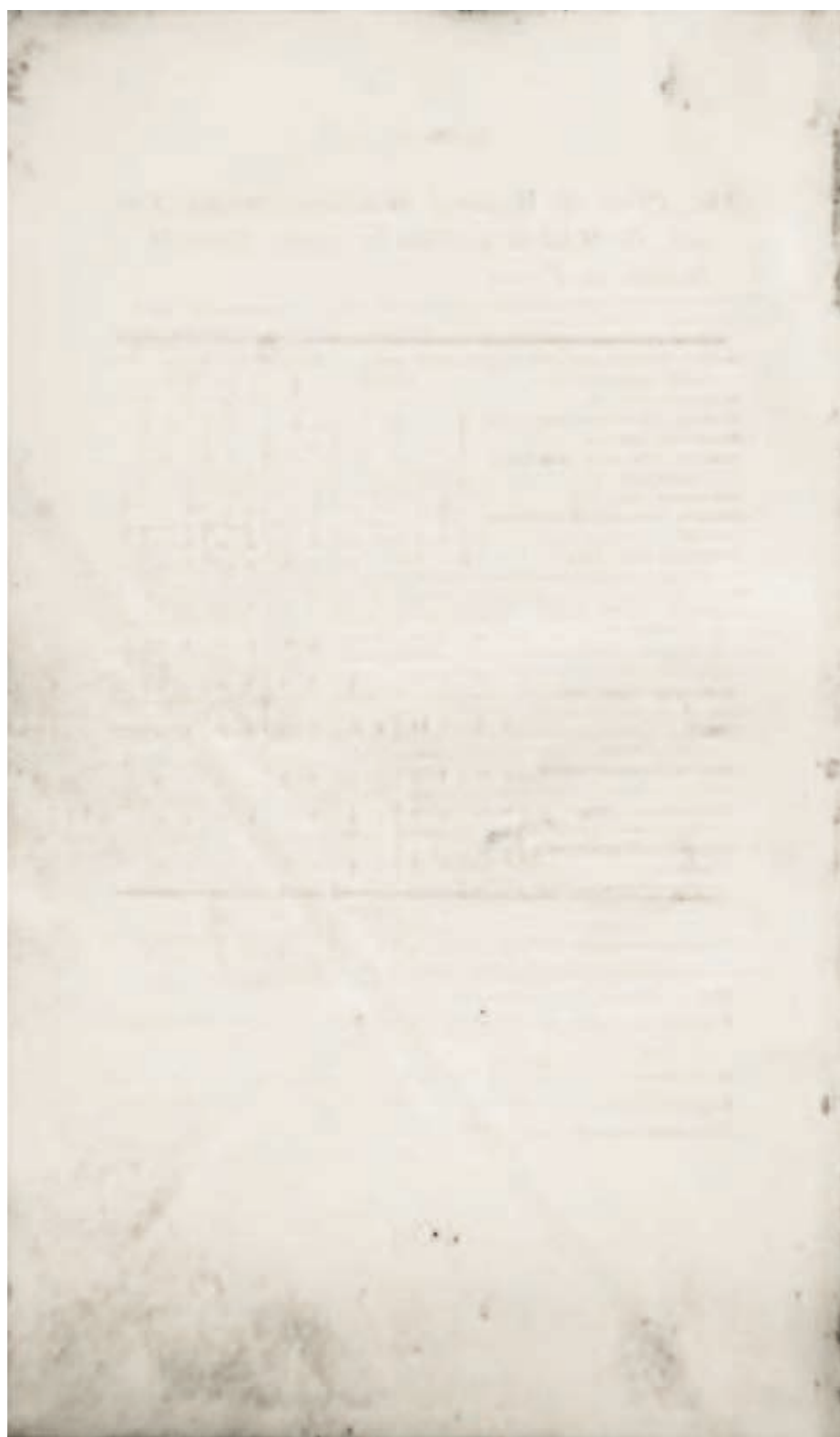




## No. 3.

*Forming Pannels by Band on Chair-Tops, either  
Straight or Hollow in Front.*

An oval pannel, formed by either straight or cross band, twelve inches long and under, with a single string on each side, is 4d. Each extra string round ditto, 2d. If pannels are formed by cross band, to be extra in the filling, 1d. On hollow tops, 2d.	On straight tops			On tops hollow in front		
	Forming a pannel with a band	Ditto with a single string on each side	Ditto with a double string on both sides	Forming a pannel with a band	Ditto with a single string on each side	Ditto with a double string on both sides
A square pannel, twelve inches long and under	s. d. 0 6 <sup>1</sup>	s. d. 0 8 <sup>1</sup>	s. d. 0 9	s. d. 0 8	s. d. 0 10	s. d. 0 11 <sup>1</sup>
Ditto with round ends	0 8 <sup>1</sup>	0 10 <sup>1</sup>	0 11 <sup>1</sup>	0 10	1 0 <sup>1</sup>	1 1 <sup>1</sup>
Ditto with hollow ends	0 9	0 11	1 0 <sup>1</sup>	0 10 <sup>1</sup>	1 0 <sup>1</sup>	1 2
Ditto with astragal ends	1 0	1 2 <sup>1</sup>	1 4 <sup>1</sup>	1 2	1 5	1 7
A diamond or canted corner pannel	0 9	0 11	1 0 <sup>1</sup>	0 10 <sup>1</sup>	1 0 <sup>1</sup>	1 2 <sup>1</sup>
A pannel with hollow corners	0 11	1 3	1 5 <sup>1</sup>	1 1	1 6	1 9
A hollow diamond pannel	0 11	1 3	1 0 <sup>1</sup>	1 0 <sup>1</sup>	1 4	1 6
A pannel with hollow or round gothic ends	0 10 <sup>1</sup>	1 2	1 4	1 0 <sup>1</sup>	1 4 <sup>1</sup>	1 6 <sup>1</sup>
An internal break corner pannel	1 4	1 9	2 0 <sup>1</sup>	1 6	1 11	2 3
Every three inches longer	0 0 <sup>1</sup>	0 1	0 1	0 1	0 1 <sup>1</sup>	0 1 <sup>1</sup>



## No. 4.

*The Price of Working Mouldings to shew Panels in Wide-Top Chairs, either Straight or Hollow in Front.*

Beading outside edge of square wide top, 1 <sup>st</sup> d.	On wide tops, straight in front.			On wide tops, hollow in front.		
Rounding ditto, 2 <sup>d</sup> .	With a flat ground moulding	With a book-edge moulding	With a land ground moulding	With a flat ground moulding	With a book-edge moulding	With a land ground moulding
Beading a round end ditto, 2 <sup>d</sup> .						
Rounding ditto, 2 <sup>d</sup> .						
Beading ditto with canted-cornered ends, 2 <sup>d</sup> .						
Rounding ditto, 2 <sup>nd</sup> d.						
Beading ditto with astragal ends, 3 <sup>d</sup> .						
Rounding ditto, 3 <sup>d</sup> .						
Forming a square panel on a wide-top chair	1. 0 0 7	1. 0 0 9	1. 0 0 10	1. 0 0 9	1. 0 0 11	1. 0 1 0
Ditto with round ends	0 10	1 0	1 1	1 0	1 2	1 3
Ditto with canted corners	1 0	1 2	1 3	1 2	1 4	1 5
Ditto with astragal ends	1 4	1 6	1 7	1 6	1 8	1 9

Forming a raised panel on a wide-top chair with one square, a margin on the outside of ditto, on a top, straight in the front, 10d.

Ditto on a top, hollow in front, 11.

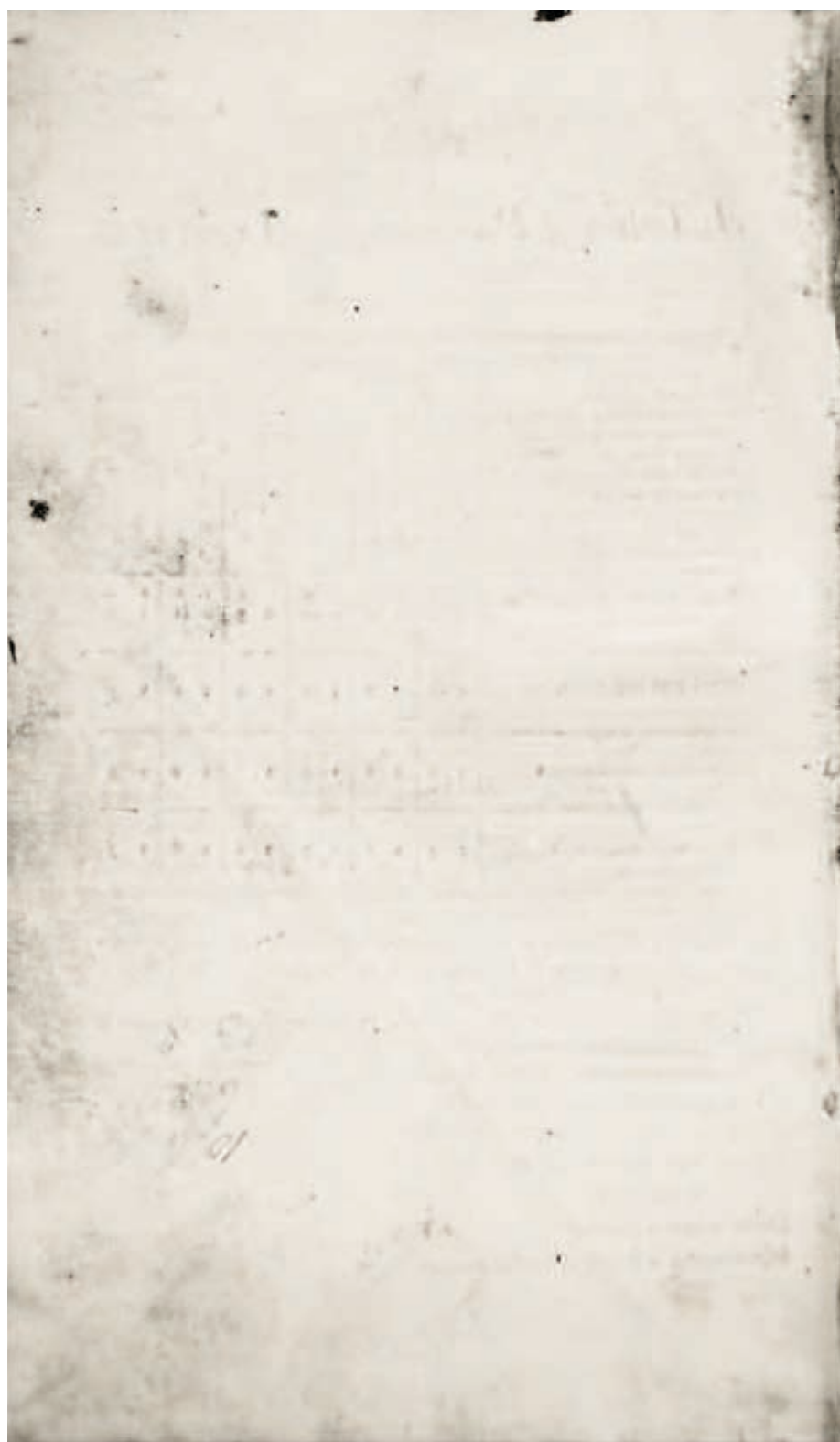
A hollow, and one square, on the inner edge of the margin, on a top, straight in front, 3d.

Ditto when on a top, hollow in front, 6d.

A quarter-round on the inner edge of a margin, on a top, straight in front, 4d.

Ditto when on a top, hollow in front, 8d.









11-  
 1  
 2  
 3  
 4  
 5  
 6  
 7  
 8  
 9  
 10  
 11  
 12  
 13  
 14  
 15  
 16  
 17  
 18  
 19  
 20  
 21  
 22  
 23  
 24  
 25  
 26  
 27  
 28  
 29  
 30  
 31  
 32  
 33  
 34  
 35  
 36  
 37  
 38  
 39  
 40  
 41  
 42  
 43  
 44  
 45  
 46  
 47  
 48  
 49  
 50  
 51  
 52  
 53  
 54  
 55  
 56  
 57  
 58  
 59  
 60  
 61  
 62  
 63  
 64  
 65  
 66  
 67  
 68  
 69  
 70  
 71  
 72  
 73  
 74  
 75  
 76  
 77  
 78  
 79  
 80  
 81  
 82  
 83  
 84  
 85  
 86  
 87  
 88  
 89  
 90  
 91  
 92  
 93  
 94  
 95  
 96  
 97  
 98  
 99  
 100