

THE AMOS POULSUM BUREAU - A USEFUL BENCHMARK IN 18TH CENTURY FURNITURE ANALYSIS

This photograph shows an early use of straight-grain mahogany in the construction of a bureau of conventional design for this period, the two small and three long graduated drawers with oak linings and cock-beaded front edges.

The brass swan-neck handles are original, pointing-again- to an early use of a handle design more usually found on drawers c. 1740 and later.

Underside of top small drawer bearing inscription 'made by Amos Poulsum. January ye 14th 1727'

Bureau with well-constructed, fitted interior, central cupboard opening to reveal a drawer to top and bottom, being flanked by Doric columns, four pigeon holes to either side with shallow drawer over, and two short and one long drawer under. The base on original bracket feet, the sides and front having reeded quarter columns.

Size 117 cm wide x 112 cm high x 58cm deep

Any information regarding the location of Amos Poulsum's workshop in the 18th century would be welcome.

Barbara Pearce

(Photographs courtesy of Mr. Adrian Cockerell of Andrew Grant, Fine Art Auctioneers, Worcester.)



Fig. 17

Fig.

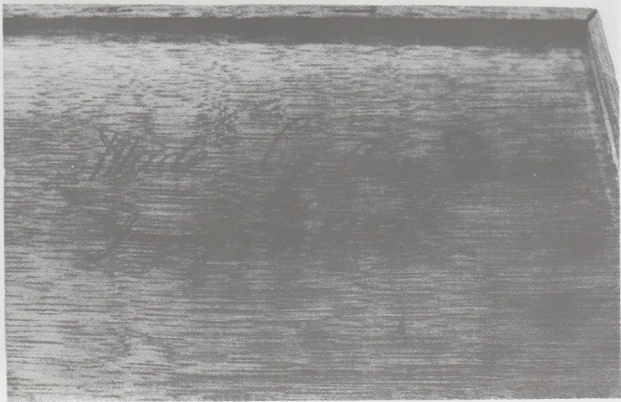


Fig. 18