

# WELSH FURNITURE STUDY DAY

## Sunday 14 June 1998

An oak dresser base with a flowing inlay design on the drawer fronts was one of the highlights of the Parry Sale last year, having been previously exhibited at Olympia on the stand of the RFS. It is undoubtedly a Welsh piece, with distinctive Welsh decoration, but from which part of Wales?

The catalogue described it as Swansea Valley which is the most westerly of the Glamorganshire valleys. The provenance given was 'Edwinsford, Lampeter'. Lampeter is in the Teifi Valley in Cardiganshire, although Edwinsford is over the hills in the Cothi Valley, Carmarthenshire. The catalogue also stated that there is an 'almost identical' example in the Museum of Welsh Life. However, that piece came from the Rhymney Valley, the most easterly of the Glamorganshire valleys. So we have an attribution that spans the entire length of South Wales.

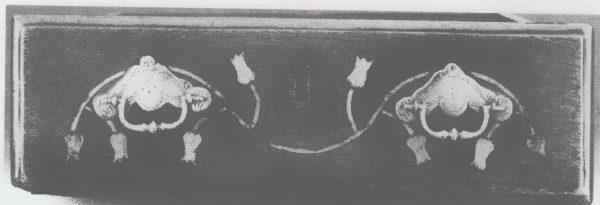
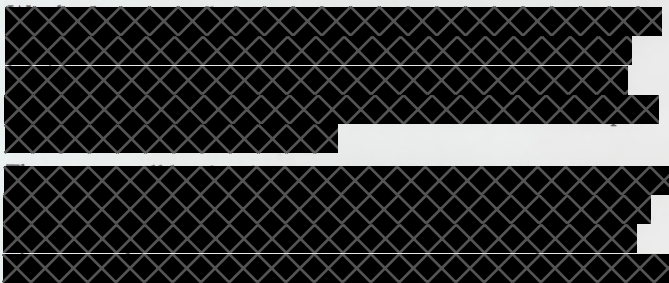


Fig. 2.  
Drawer  
front

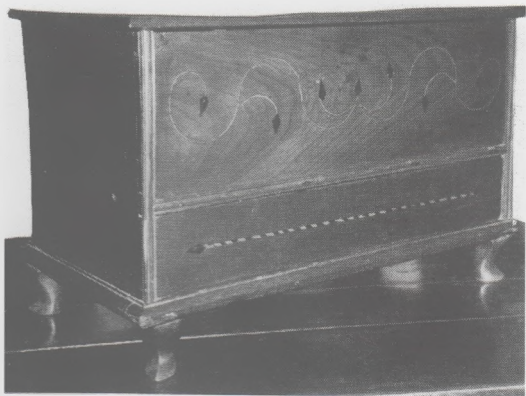


Fig. 3. Oak Coffe Bach, South Pembrokeshire.  
Or Vale of Glamorgan. Or perhaps Towy Valley?

