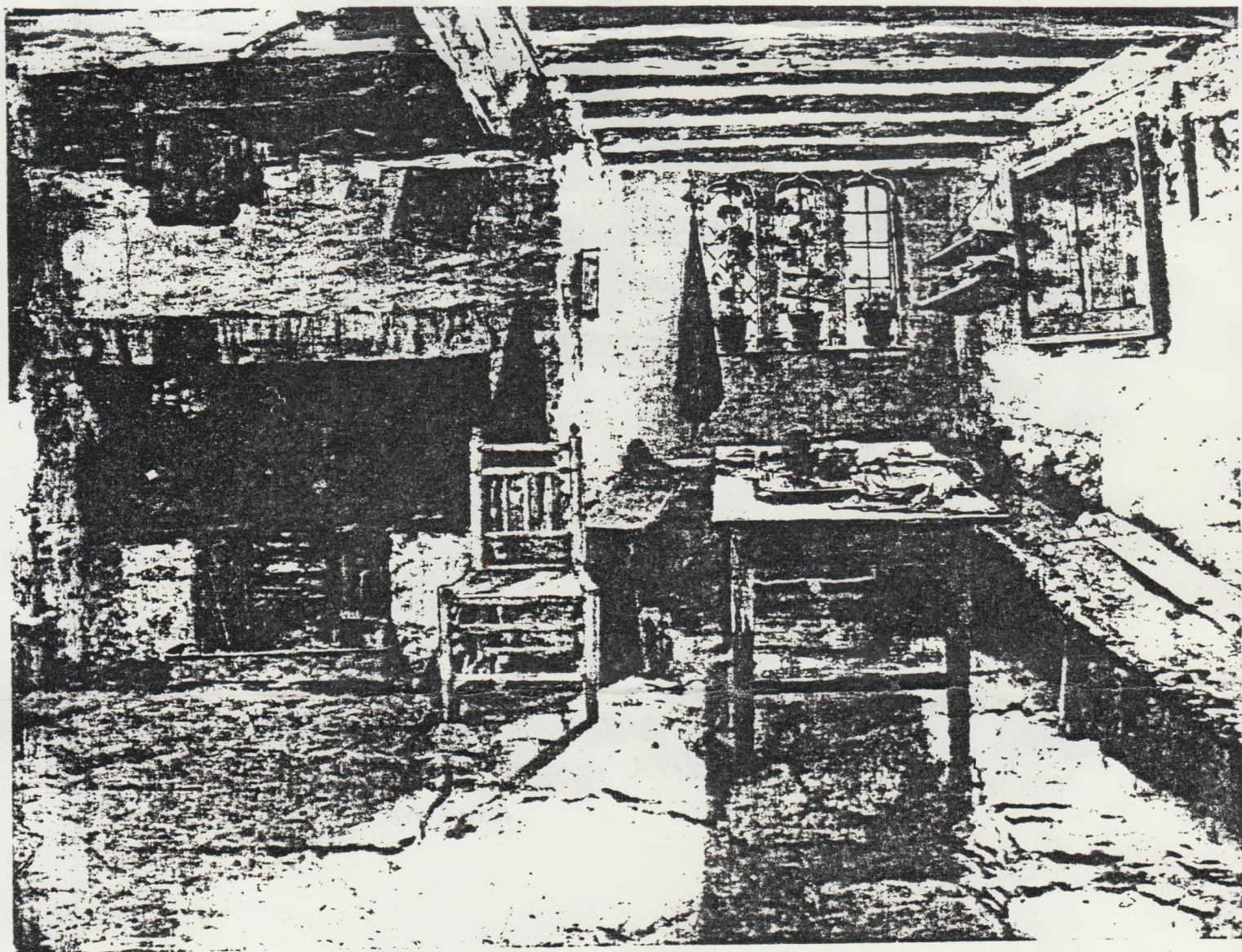


A Child's Chair from Devon

Results from the survey by members of the photographs of paintings of vernacular interiors held by the major auction houses are starting to appear. Barbara Pearce has acquired an ash child's chair from Devon in original condition that closely resembles the adult's chair shown in the painting, "Cottage Interior, North Devon", 1842 by Thomas Faed, 1826-1900, which was sold at Phillips, London, in March 1982 (reference 23791/165 15/3/82).

This type of chair with its three spindles has not previously been associated with the West Country.



Scale 1: $\frac{1}{8}$

(Drawn to scale)

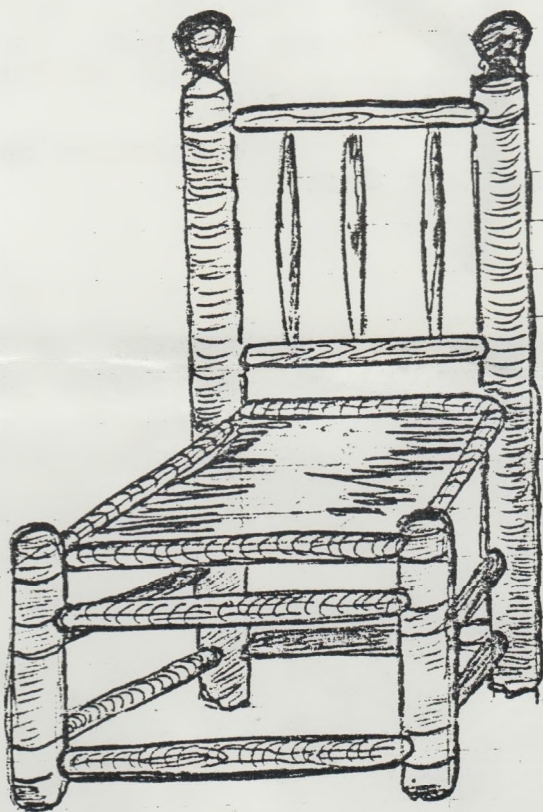
Ht. Overall 28"
(Finials) 2 $\frac{1}{4}$ "

Seat widths:
Front 16"
Back 11 $\frac{1}{2}$ "

Ht. of Front
legs 11 $\frac{3}{4}$ "

Legs - back
& front
widths 2"

Stretchers
width 1"



Ash framed throughout

An interesting child's chair from Devon with many constructional features similar to the chair shown in Thomas Faed's painting of "North Devon Kitchen Interior - 1842". This chair is in totally original & unaltered condition.

Barbara Pearce.