

We then examined a number of chairs of different styles. These included a rush-seated ladder or splat-back armchair (fig 13) which incorporated a number of



Fig 13 Ladderback armchair attributed to N.W. England

stretcher was felt to be 'more finished' than usual, and it was suggested to be similar to those made by Wilcox for Gillows.

There was little dispute over the place of origin or date of an Cheshire oak candle box (figs. 14 & 15)

features that one associates with North West chairmaking traditions. Reference was also made to the spherical finials, the sausage turned front legs and in particular the chamfered ladders which have parallels with the chairmaking traditions of the Low Countries.

A low-back Windsor of Thames Valley style with an almost flat crinoline

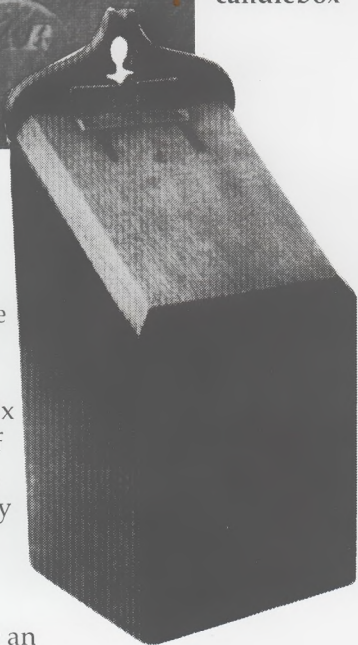


Fig. 14 Candlebox inscription

Fig. 15 (below) Oak candlebox

inscribed with 'Richard Watkin, Smith, Maker Pulford, July 11 Year 1854' in extremely precise incised letters.

By contrast an elm top table proved to be one of the most contentious items; the rounded six lobed top over six turned columns above a shelf standing on carved hoof feet, made it unconventional to say the least. However the materials, construction and finish all pointed to an 18th century piece, albeit of rather an eccentric form!



C. Currie