

A MORLEY FLUSH-DOOR CONSTRUCTION

Following my report on current research on the cabinet-maker David Morley of Carmarthen at the Research In Progress day, a group of furniture securely attributable to him has emerged in another Carmarthen gentry house. Among the items are a mahogany press cupboard (fig. 12) and a wing wardrobe, both of Hepplewhite pattern, with veneered flush doors.

Flush doors of this sort are I believe usually constructed from wide pine boards, clamped at top and bottom. A glance at the photo of the inside of the wardrobe door (the press cupboard is the same) shows a remarkably different construction (fig.13), framed with a central cross-rail, and the two spaces filled by full-thickness block panels with grain running in alternating directions, to virtually eliminate problems of shrinkage and warping. It is totally effective, very expensive to make, and possibly unique in regional cabinet-making – or is it? Has anyone seen it elsewhere – for example in Manchester, where Morley was trained?

Any reports or comments on this exciting find will be gratefully received and acknowledged by Luke Millar at 11 Constitution Hill, Cowbridge, CF71 7BH. Or ring 01446 773528 (evenings).

TRUST FURNITURE

An unusual combination of table and chest made in mahogany with a trust landmark under the fold-down table flap. Is this another example of workhouse furniture? *Photographs supplied by Danny Robinson.*

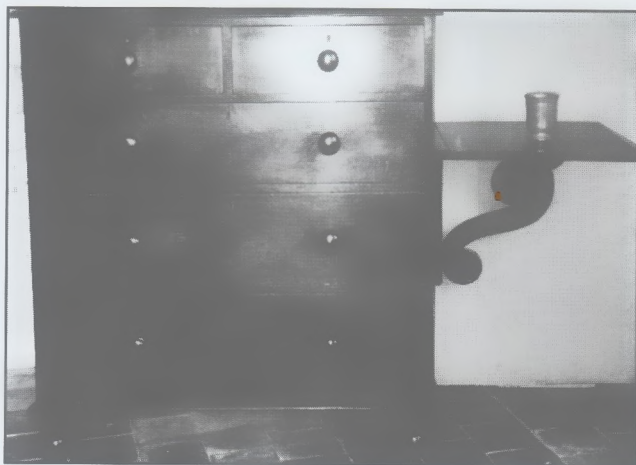


Fig 14

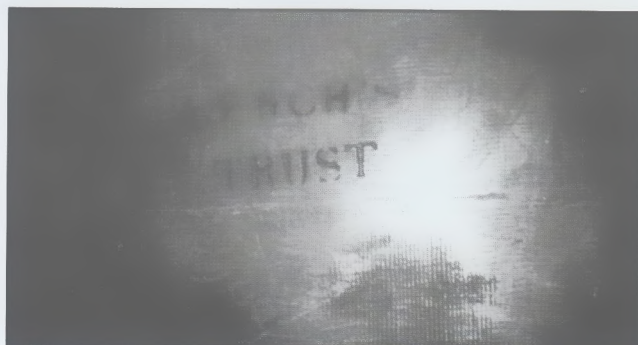


Fig 15



Fig. 12



Fig. 13