



Fig. 1



Fig. 2



Fig. 3

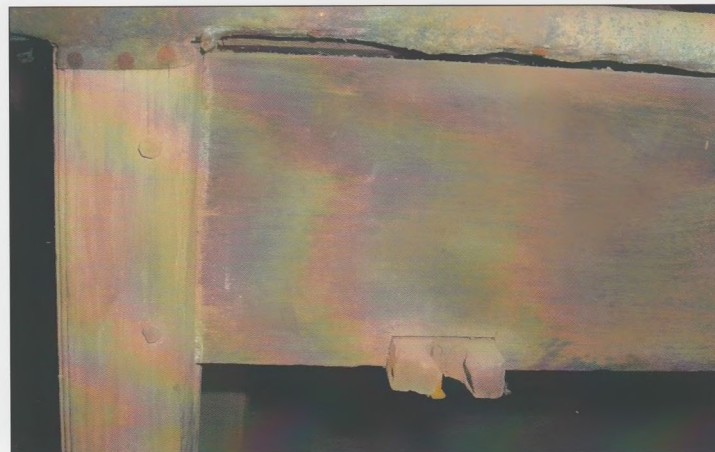


Fig. 4

A Table from Australia

I am seeking to identify a hinging technique used on an early colonial table in the Rouse Hill Estate collection of the Historic Houses Trust of New South Wales. The table, c. 1820, is typical of late Georgian colonial furniture and although well made, it lacks the finesse and finish of the formal colonial pieces also provenanced to the Rouse Hill Estate, suggesting a functional piece, possibly a kitchen table. It is similar in size to items auction houses and dealers label 'wake tables' (Figs. 1 and 2).

The table has had two rectangular leaves, supported by a pair of simple hinged timber brackets, of which only the mounting points survive. The timber brackets were each pivoted in a large diameter hole in the table top and a corresponding hole in a stretcher fixed across the table rails (Figs. 3, 4 and 5). This particular style of hinging technique is unusual in Australian furniture, and to the present has only been found on Irish tables.

I would greatly appreciate any information regarding the use and origin of this technique on tables. Is it peculiar to a single vernacular furniture tradition? I am also interested in locating similar tables in public collections, and avenues for further investigation. Any assistance would be beneficial and may help to provide insight into the manufacturers of this table.

Matthew Scott,
*Housekeeper, Rouse Hill Estate, Guntawong Road,
 Rouse Hill, New South Wales 2155, Australia
 info@hht.net.au*



Fig. 5